

2018 Land Budget Overview Expenditure Review

Platte River Recovery Implementation Program

For More Information Contact: Jason Farnsworth, farnsworthj@headwaterscorp.com, (308) 237-5728

2018 Land Budget Overview By Budget Line Item

Budget Line Item	Description	Estimated Expenditure****	Actual Expenditure
LP-2	Adaptive Management Species Habitat Actions*	\$270,625	\$195,896
LP-3	New Land Acquisitions	\$1,000,000	\$306,611
LP-4	Property Maintenance & Agricultural Operations**	\$203,250	\$156,285
LP-6	Land Plan Special Advisors	\$20,000	\$15,701
LP-7	Public Access Management	\$50,000	\$50,000
WP-4 (j)	Property Maintenance for Water Properties***	\$103,000	\$58,344

* Includes \$50,000 in LP-2 for new acquisitions in 2018.

** Includes \$50,000 in LP-4 for new acquisitions in 2018.

*** Includes \$50,000 in WP-4 (j) for new acquisitions in 2018.

**** The budget items have not been reviewed by the LAC and may be revised subsequent to LAC approval of land budget items.

2018 Budget Overview By Complex

Complex	Estimated Expenditure	Actual Expenditure	Estimated Income	Actual Income
Non-Complex Tracts	\$73,780	\$47,430	\$38,410	\$65,940
Plum Creek "Complex"	\$35,405	\$35,690	\$12,900	\$13,309
Cottonwood Ranch Complex	\$65,330	\$41,642	\$4,500	\$17,057
Elm Creek Complex	\$66,295	\$45,291	\$16,820	\$14,950
Pawnee Complex	\$17,600	\$43,921	\$4,720	\$5,190
Fort Kearny Complex	\$80,440	\$84,581	\$30,370	\$49,591
Minden-Gibbon Complex	\$12,000	\$13,780	\$0	\$0
Clark Island Complex		\$23,325		\$30,360
Shoemaker Island Complex	\$23,025	\$16,521	\$30,000	\$41,011
Water Properties	\$53,000	\$58,344	\$6,760	\$34,674
New Acquisitions *	\$150,000		\$0	\$0
Total	\$576,875	\$410,525	\$144,480	\$272,082

* \$50K for maintenance, \$50K for species habitat & \$50K for water land maintenance

2018 Budget Priority Areas by Budget Line Item

LP-2 – Adaptive Management Species Habitat Actions: Species habitat priorities for 2018 were focused on creation and maintenance of suitable complex and non-complex habitat for Program target species.

LP-3 – New Land Acquisitions: 2018 land acquisition priorities included identification of lands for construction of an additional 60 acres of off-channel sand and water habitat for the least tern and piping plover and identification of lands that could count towards the First Increment Extension habitat land "plus up" of 1,500 acres.

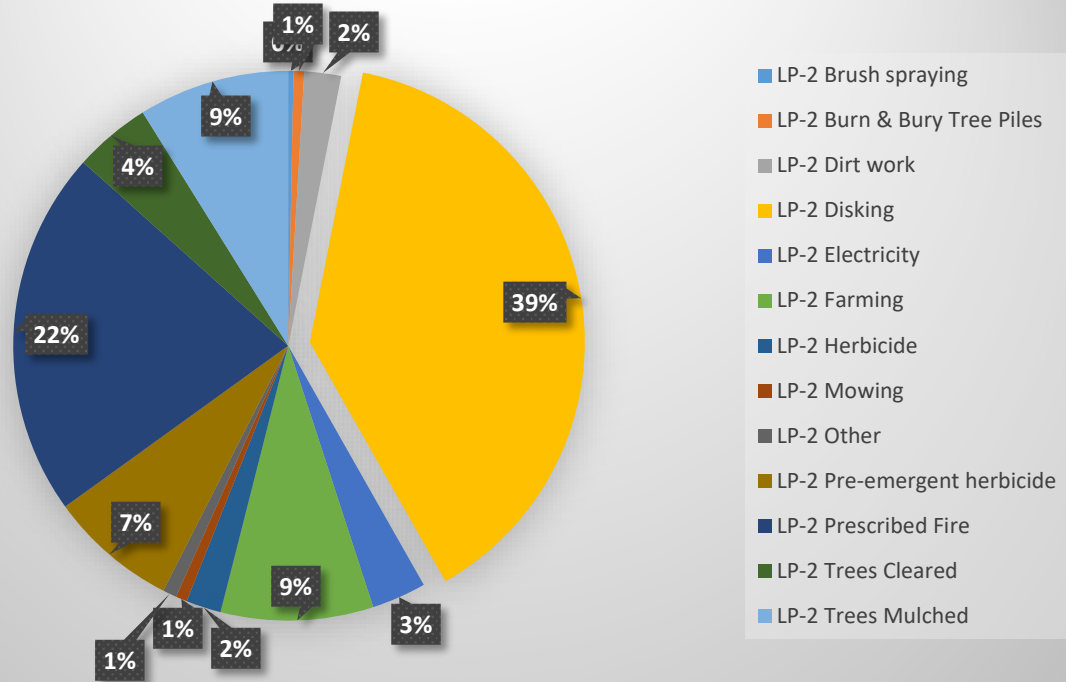
LP-4 – Property Maintenance & Agricultural Operations: 2018 priorities included maintenance of basic land infrastructure such as facilities, roads, and fences as well as fulfilling basic ownership obligations like noxious weed control and ROW mowing.

LP-6 – Land Plan Special Advisors: Priorities for special advisors included administration of agricultural leases and associated FSA obligations, crop management and marketing, and assistance in cropland conversions.

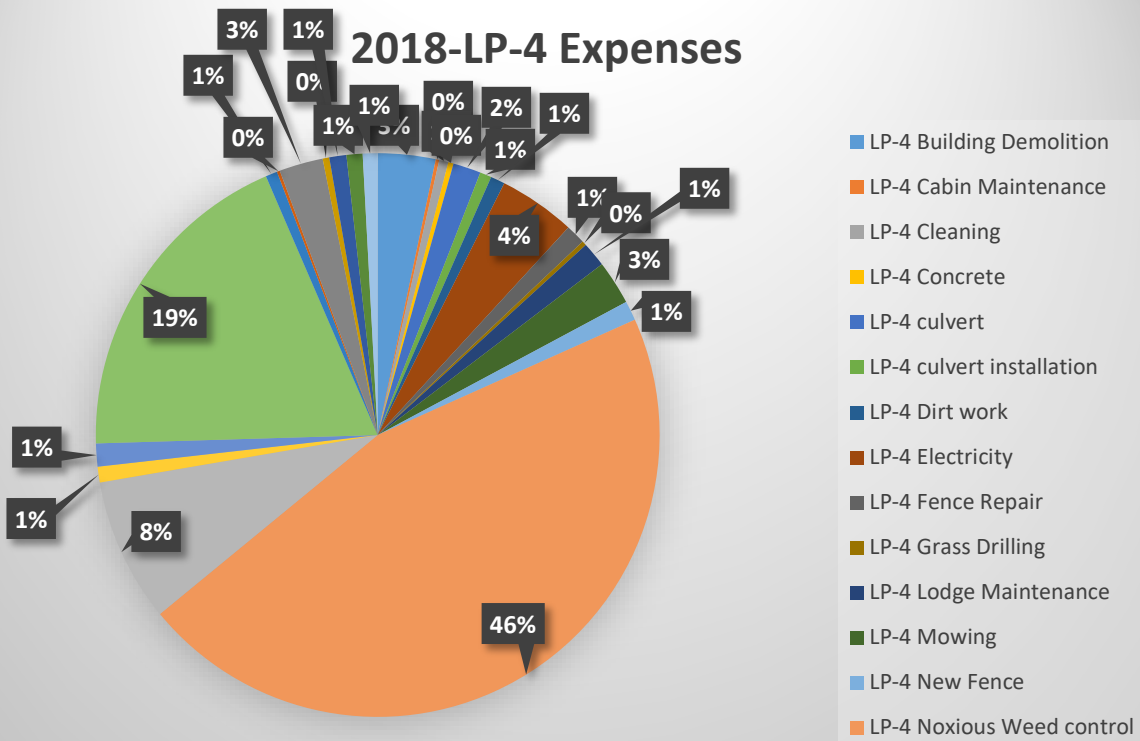
LP-7 – Public Access Management: Nebraska Game and Parks Commission managed the public access to Program lands in 2018.

WP-4 (j) – Property Maintenance for Water Properties: 2018 priorities included maintenance of basic land infrastructure such as facilities, roads, and fences as well as fulfilling basic ownership obligations like noxious weed control and ROW mowing.

2018-LP-2 Expenses



2018-LP-4 Expenses



2018 Non-Complex Properties Annual Work Plan Report

Platte River Recovery Implementation Program

For More Information Contact: Jason Farnsworth, farnsworthj@headwaterscorp.com, (308) 237-5728

General Priorities

- * **Good Neighbor Policy** - Conducted all actions in accordance with Program's good neighbor policy.

Adaptive Management Priorities

- * **Species Monitoring** – Monitored whooping crane use of non-complex palustrine wetlands and least tern and piping plover use and productivity at off-channel sand and water nesting sites.

Species Habitat Priorities

- * **Maintain Suitable Off-Channel Sand and Water Nesting Habitat** – Applied pre-emergent herbicide on Tracts 2009008, 2010002, 2011001, and 2011002 OCSW nesting habitat to prevent vegetation encroachment into nesting areas.
- * **Maintain Suitable Palustrine Wetland Roosting Habitat** – Managed vegetation height in the palustrine wetland areas of Tracts 2012004 and 2013001 to maintain suitable unobstructed view widths for whooping crane roosting.
- * **Protecting Other Species of Concern** – Identified presence of and determine methods to protect other species of concern during implementation of land-related activities.

Operations and Maintenance Priorities

- * **Basic Property Maintenance Obligations and Needs** – Fulfilled basic property ownership obligations and needs including boundary fence signage, road maintenance, and noxious weed control.
- * **Agricultural Operations** – Oversight of crop leases on Tracts 2009008, 2012004 and 2013001 and hay lease on Tract 2011001.
- * **Sand and Gravel Mining Operations** – Monitored sand and gravel mining operations on Tracts 2009008 and 2011002.

NOTE: The budget section of this work plan only contains information for work items that are specific to these tracts. As such, tract-specific research and monitoring actions are presented but system-scale actions like target species and geomorphology/vegetation monitoring are not.

Priority Area: *General*

Item(s): *Land Interest and Tract-Level Restoration and Maintenance Planning*

No.	Management Activities	Budget Line Item	Completed	Cost (Estimated)	Actual Cost
NC 1	Coordination of Program land actions with neighboring landowners	N/A	Yes	N/A	N/A

Priority Area: *Species Habitat*

Item(s): *Maintain Suitable In- and Off-Channel Sand & Water Habitat*

No.	Management Activities	Budget Line Item	Completed	Cost (Estimated)	Actual Cost
NC 2	Herbicide applications on OCSW peninsulas to maintain bare sand nesting habitat	LP-2	Yes	\$9,500	\$9,893
NC 3	Construct 10 acres of on-channel LT/PP nesting habitat	LP-2	Yes	\$15,330	\$1,690

Priority Area: *Species Habitat*

Item(s): *Maintain Suitable Palustrine Wetland Habitat*

No.	Management Activities	Budget Line Item	Completed	Cost (Estimated)	Actual Cost
NC 4	Irrigation well pumping to augment water level in wetland area of Tract 2013001	LP-2	Yes	\$4,500	\$2,069
NC 5	Brush, tree, cattail herbicide spraying	LP-2	Yes	\$3,300	\$616
NC 6	Tract 2013001 Custom Farming Expenses	LP-2	Yes	\$16,500	\$17,671

Priority Area: Species Habitat**Item(s):** *Other Species of Concern*

No.	Management Activities	Budget Line Item	Completed	Cost (Estimated)	Actual Cost
NC 7	Habitat and species surveys on properties where work will occur	N/A	Yes	N/A	N/A
NC 8	Coordination with USFWS and NGPC to identify and mitigate potential impacts associated with land activities	N/A	Yes	N/A	N/A

Priority Area: Operations and Maintenance**Item(s):** *Basic Property Maintenance Obligations and Needs*

No.	Management Activities	Budget Line Item	Completed	Cost (Estimated)	Actual Cost
NC 9	Fence and road maintenance	LP-4	Yes	\$2,500	\$473
NC 10	Smooth accretion and redrill alfalfa on Tract 2011001 East- (~61 acres)	LP-4	Yes	\$9,150	\$1,446
NC 11	Noxious weed control	LP-4	Yes	\$4,500	\$822
NC 12	Construct and Maintain Parking Areas on Tract 2012004 & 2013001	LP-4	Yes	\$6,500	\$8,769
NC 13	Mowing	LP-4	No	\$2,000	\$0

Priority Area: Operations and Maintenance**Item(s):** *Agricultural Operations*

No.	Management Activities	Budget Line Item	Completed	Cost (Estimated)	Actual Cost
NC 14	Oversight of grazing and cropland leases	Annual	Yes	N/A	N/A
NC 15	Oversight of sand and gravel mining	Annual	Yes	N/A	N/A

Priority Area: *Unplanned Expenses*

Tract No.	Management Activities	Item(s):	Budget Line Item	Actual Cost
2012004	Professional Services	Maintain Suitable	LP-4	\$923
2012004	Disking	Maintain Suitable	LP-4	\$1,650
2012004	Electricity	Maintain Suitable	LP-4	\$1,408

Property Identification Key:

2009008 - PRRIP Broadfoot Newark Tract
2010002 - Broadfoot Kearney South Tract
2011001 - PRRIP East Leaman Tract
2011002 - PRRIP Follmer Alda Tract
2012004 - PRRIP DeBore Tract
2013001 - PRRIP Liehs Tract

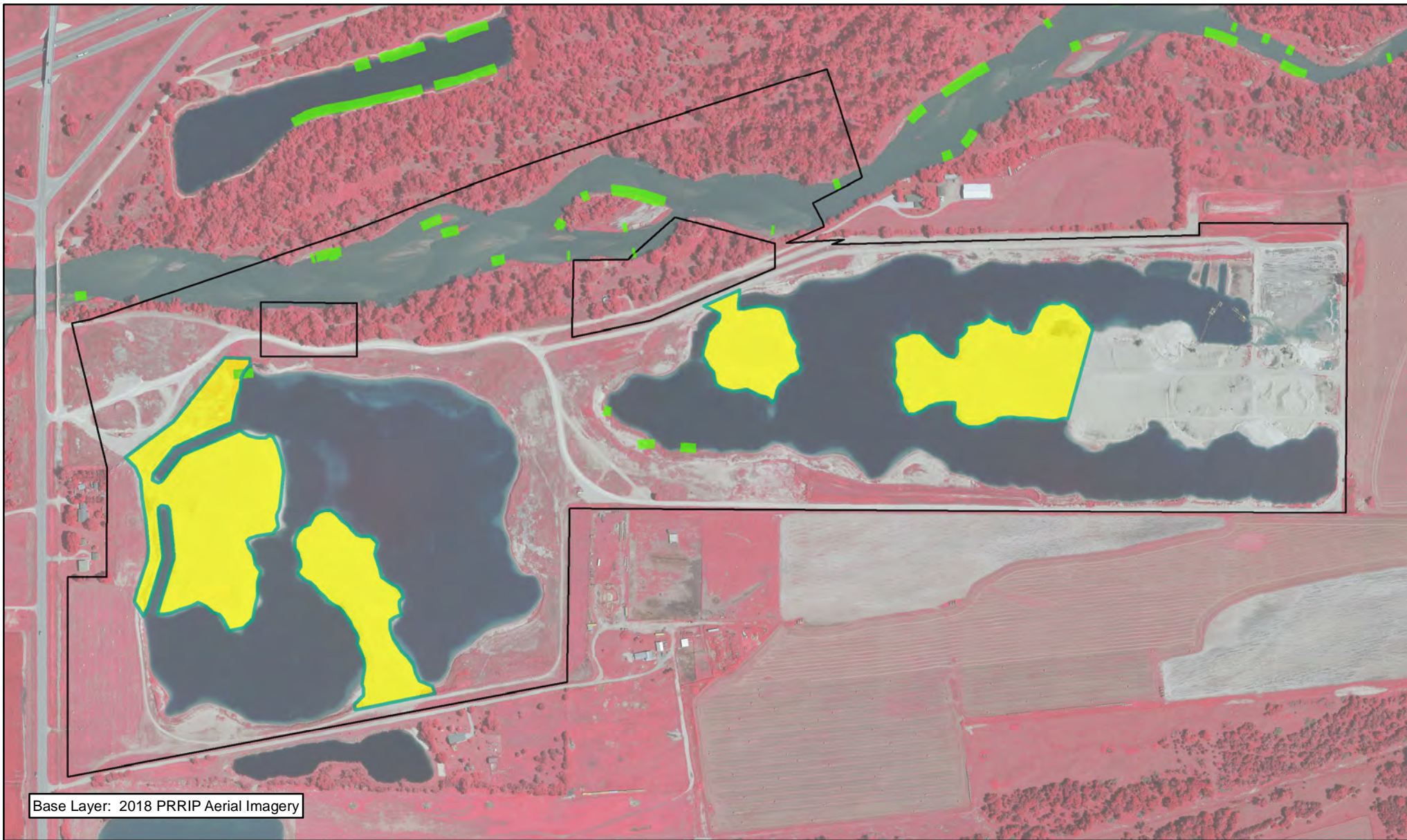
2018 Non-Complex Tracts Budget Summary

2018 Expenditures by Program Budget Line Item

Priority Area	Item	Budget Line Item	Estimated Expenditure	2018 Expenditure
Species Habitat	Create & Maintain Off-Channel Sand & Water Habitat	LP-2	\$9,500	\$9,893
Species Habitat	Create In-channel Sand & Water Habitat	LP-2	\$15,330	\$1,690
Species Habitat	Create & Maintain Palustrine Wetland Habitat	LP-2	\$24,300	\$20,356
Subtotal			\$49,130	\$31,939
Operations and Maintenance	Property Maintenance and Agricultural Operations	LP-4	\$24,650	\$15,491
Total			\$73,780	\$47,430

2018 Revenues

Tract	Item	Estimated Income	2018 Income
Tract 2009008	Sand & Gravel 2016-17 Royalties	\$12,000	\$30,058
Tract 2009008	Hay Income	\$400	\$400
Tract 2011001	Hay Income	\$1,000	\$485
Tract 2011002	Sand & Gravel Royalties	\$1,500	\$0
Tract 2011002	Cropland Income	\$5,000	\$5,000
Tract 2012004	Cropland Income	\$3,000	\$3,600
Tract 2012004	Grazing Income	\$0	\$0
Tract 2013001	Cropland Cash Rent Income	\$4,000	\$6,550
Tract 2013001	Cropland Custom Farm Income	\$11,510	\$19,838
Tract 2013001	FSA Payment		\$9
Total		\$38,410	\$65,940



Legend

- PVWMA Phrag Control
- Noxious Weed Control
- Herbicide
- Preemergent

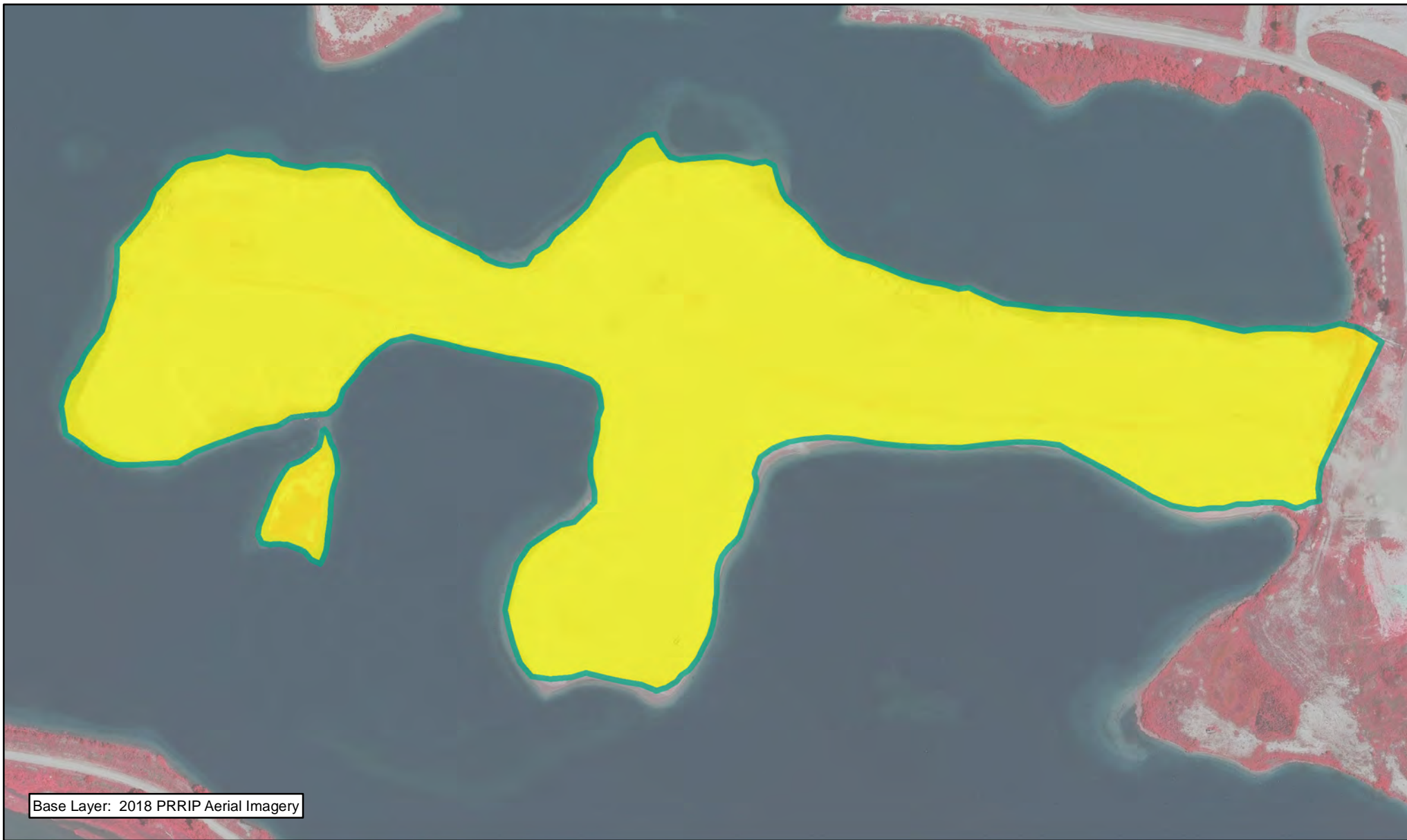


0.5 Miles

NON-COMPLEX
TRACT 2009008
FY 2018 ACTIVITIES

Date: 2/12/2019
By: TRT



Figure 1




Base Layer: 2018 PRRIP Aerial Imagery



Legend

-  Preemergent
-  Herbicide



 Miles
0.1

NON-COMPLEX
TRACT 2010002
FY 2018 ACTIVITIES





Date: 2/12/2019
By: TRT

Figure 2




PLATTE RIVER
RECOVERY IMPLEMENTATION PROGRAM

Legend

-  PVWMA Phragmites Control
-  Noxious Weed Control
-  Herbicide
-  Preemergent

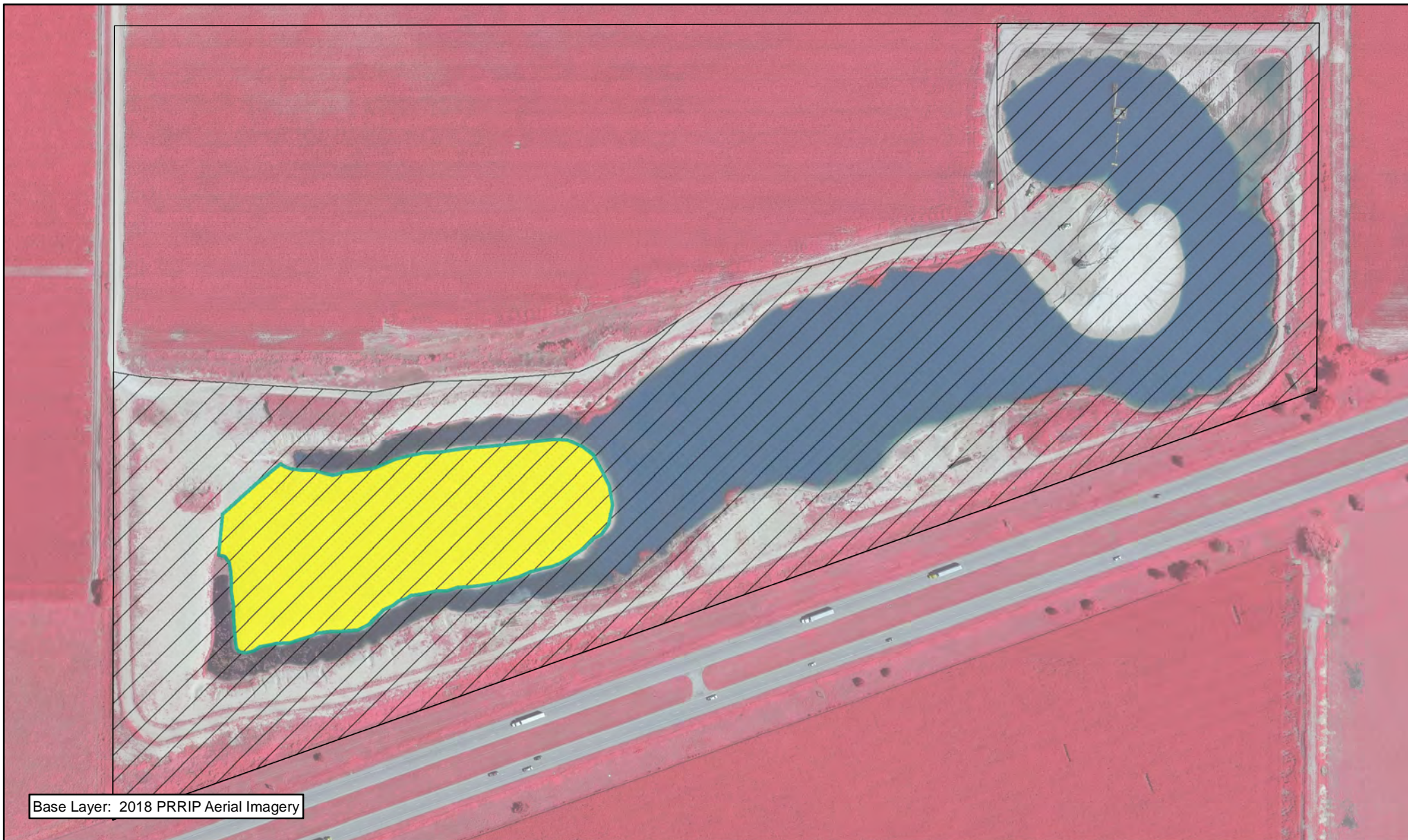


 0.5 Miles

NON-COMPLEX
TRACT 2011001
FY 2018 ACTIVITIES

Date: 2/12/2019
By: TRT




Figure 3




Base Layer: 2018 PRRIP Aerial Imagery



Legend

-  Herbicide
-  Noxious Weed Control
-  Preemergent



 0.1 Miles

NON-COMPLEX
TRACT 2011002
FY 2018 ACTIVITIES

Date: 2/12/2019
By: TRT

Figure 4





Base Layer: 2018 PRRIP Aerial Imagery




PLATTE RIVER
RECOVERY IMPLEMENTATION PROGRAM

Legend

-  Parking Lot Construction
-  Noxious Weed Control

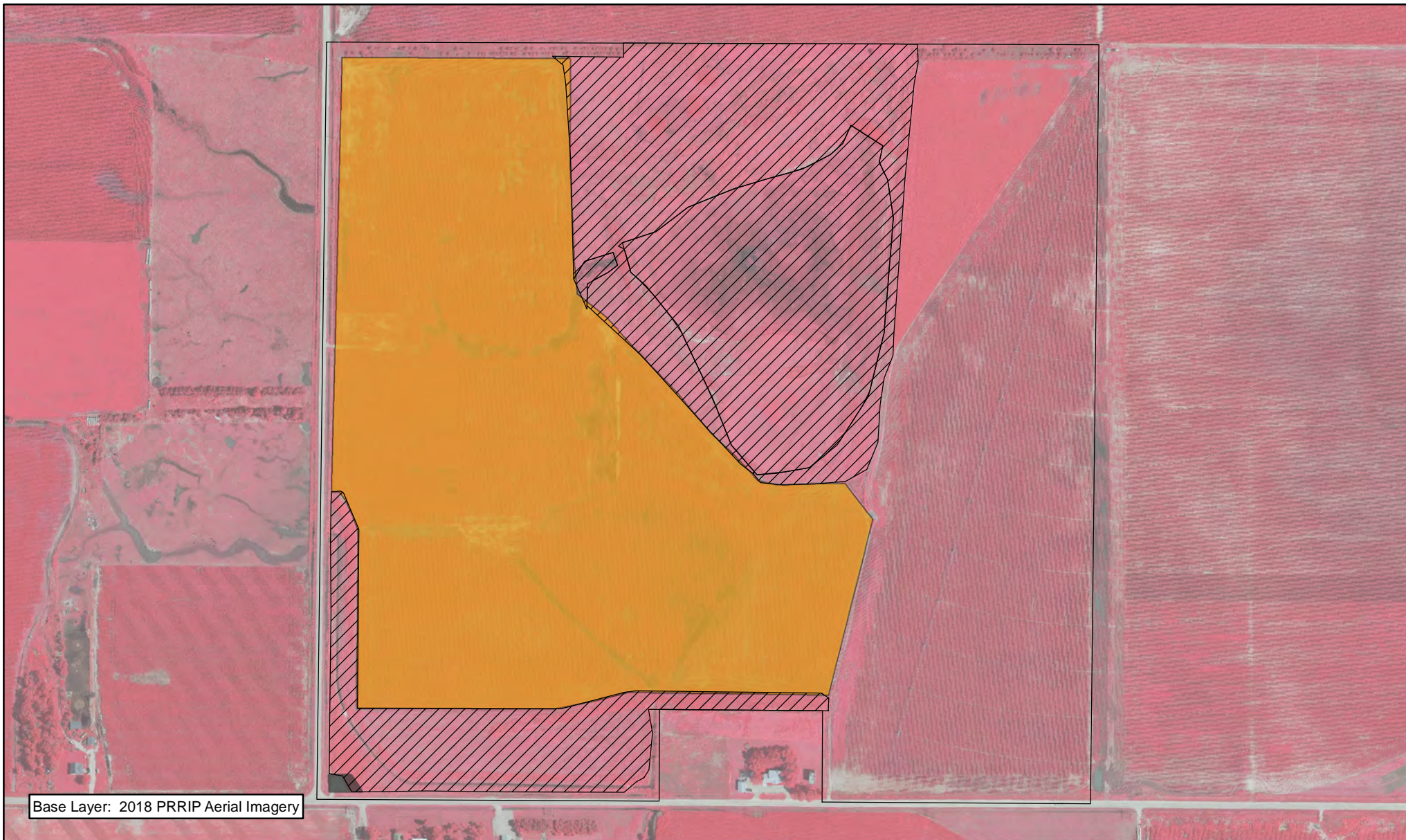


 0.2 Miles


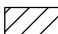

NON-COMPLEX
TRACT 2012004
FY 2018 ACTIVITIES

Date: 2/12/2019
By: TRT


Figure 5



Legend

-  Crop-Custom Farm
-  Noxious Weed Control
-  Parking Lot Construction

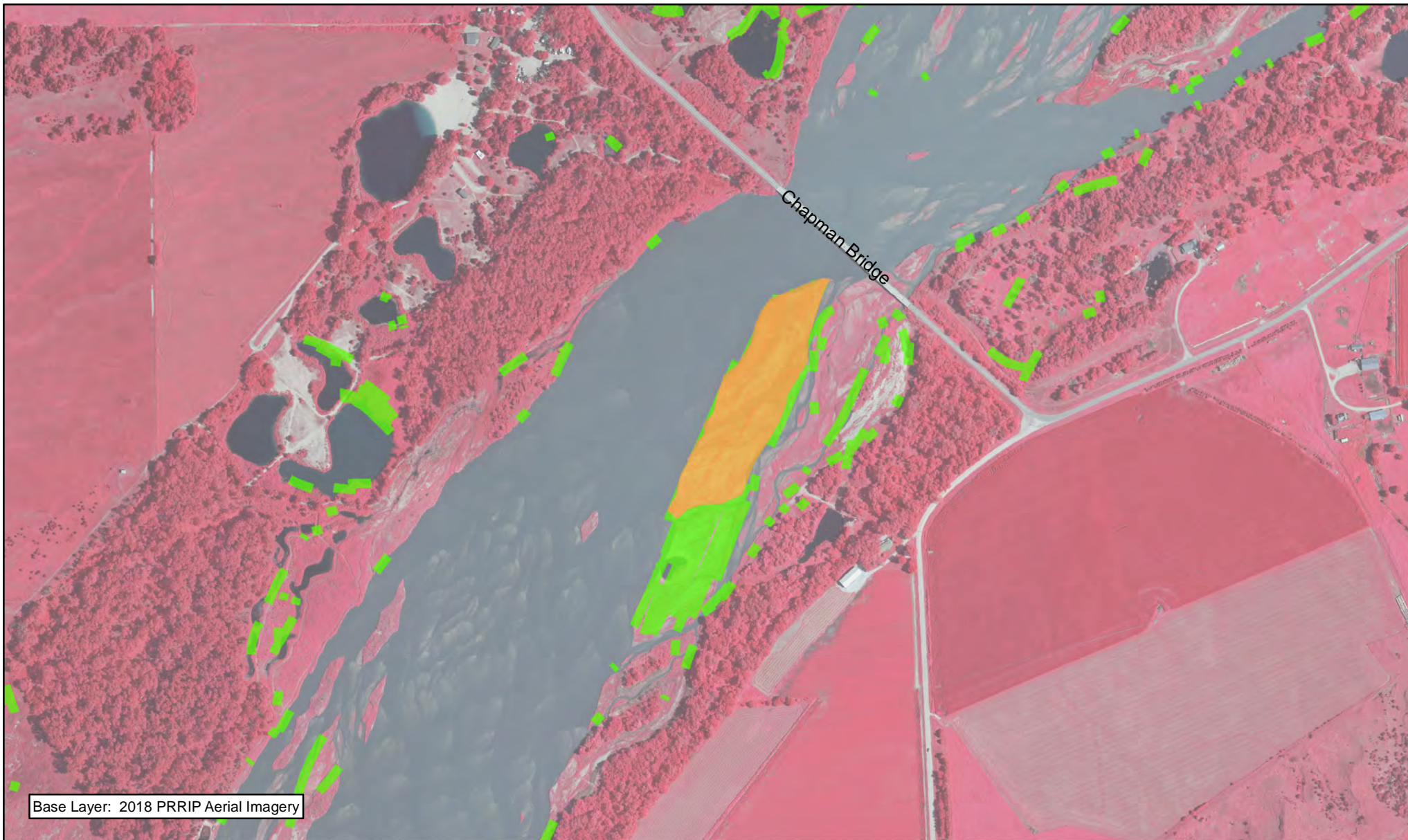


 0.2 Miles

NON-COMPLEX
TRACT 2013001
FY 2018 ACTIVITIES

Date: 2/12/2019
By: TRT

Figure 6





Base Layer: 2018 PRRIP Aerial Imagery




PLATTE RIVER
RECOVERY IMPLEMENTATION PROGRAM

Legend

-  PVWMA Phrag Control
-  Disking



 Miles
0.3

NON-COMPLEX
MCA ISLAND
FY 2018 ACTIVITIES

Date: 2/12/2019
By: TRT

Figure 7

2018 Plum Creek "Complex" Annual Work Plan Report

Platte River Recovery Implementation Program

For More Information Contact: Jason Farnsworth, farnsworthj@headwaterscorp.com, (308) 237-5728

General Priorities

- * **Good Neighbor Policy** - Conducted all actions in accordance with Program's good neighbor policy.

Adaptive Management Priorities

- * **Implementation of full scale sediment augmentation** - Augment 80,000 tons of sediment through mechanical augmentation. Augmentation occurred upstream of the Plum Creek Complex near the J-2 Return.
- * **Species Monitoring** – Monitored whooping crane use of riverine roosting habitat and least tern and piping plover use and productivity at off-channel sand and water nesting sites.

Species Habitat Priorities

- * **Improve Target Species Sand and Water Habitat** – Application of pre-emergent herbicide on OCSW peninsulas to maintain tern and plover nesting habitat. Controlled in-channel vegetation to maintain suitable unobstructed view widths for whooping cranes.
- * **Protecting Other Species of Concern** – Identified presence of and determine methods to protect other species of concern during implementation of land-related activities.

Operations and Maintenance Priorities

- * **Basic Property Maintenance Obligations and Needs** – Fulfilled basic property ownership obligations and needs including boundary fence signage, road maintenance, and noxious weed control.
- * **Agricultural Operations** – Oversight of grazing lease on Tract 2009003. Oversight of cropland/hay leases on Tract 2009007.

NOTE: The budget section of this work plan only contains information for work items that are specific to these tracts. As such, tract-specific research and monitoring actions are presented but system-scale actions like target species and geomorphology/vegetation monitoring are not.

Priority Area: General**Item(s):** *Complex Land Interest and Complex-Level Planning*

No.	Management Activities	Budget Line Item	Completed	Cost (Estimated)	Actual Cost
PC 1	Coordination of Program land actions with neighboring landowners	N/A	Yes	N/A	N/A
PC 2	Coordinate with NPPD to identify and mitigate potential impacts to leased NPPD nesting islands	N/A	Yes	N/A	N/A

Priority Area: Species Habitat**Item(s):** *Improve Target Species Sand and Water Habitat*

No.	Management Activities	Budget Line Item	Completed	Cost (Estimated)	Actual Cost
PC 3	Herbicide applications on OCSW peninsulas to maintain bare sand nesting habitat	LP-2	Yes	\$3,320	\$4,295
PC 4	Disking if necessary to provide in-channel vegetation control (128 ac)	LP-2	No	\$9,985	\$0

Item(s): *Whooping Crane Grassland / Wet Meadow Habitat*

No.	Management Activities	Budget Line Item	Completed	Cost (Estimated)	Actual Cost
PC 5	Soil Samples & analysis on Tract 2009003 & 2009007 grasslands	LP-2	Yes	\$5,000	\$264

Priority Area: *Species Habitat***Item(s): *Other Species of Concern***

No.	Management Activities	Budget Line Item	Completed	Cost (Estimated)	Actual Cost
PC 6	Habitat and species surveys on properties where work will occur	N/A	Yes	N/A	N/A
PC 7	Coordination with USFWS and NGPC to identify and mitigate potential impacts associated with land activities	N/A	Yes	N/A	N/A

Priority Area: Operations and Maintenance**Item(s): *Basic Property Maintenance Obligations and Needs***

No.	Management Activities	Budget Line Item	Completed	Cost (Estimated)	Actual Cost
PC 8	Decommission well NW of Parking Area on Tract 2009007	LP-4	No	\$1,000	\$0
PC 9	Fence and road maintenance	LP-4	Yes	\$3,000	\$9,976
PC 10	Noxious weed control	LP-4	Yes	\$5,500	\$6,678
PC 11	Lodge & Quonset utilities and maintenance	LP-4	Yes	\$5,600	\$7,474
PC 12	Mowing	LP-4	Yes	\$2,000	\$2,280

Priority Area: Operations and Maintenance**Item(s): *Agricultural Operations***

No.	Management Activities	Budget Line Item	Completed	Cost (Estimated)	Actual Cost
PC 13	Oversight of grazing and cropland leases	N/A	Yes	N/A	N/A

Priority Area: *Unplanned Expenses*

Tract No.	Management Activities	Item(s):	Budget Line Item	Actual Cost
2009003	Remove sand blown against predator fence	Improve Target	LP-2	\$4,250
2009003	Airboat Ramp Construction	Basic Property	LP-4	\$473

Property Identification Key:

2009003 - PRRIP Dyer Tract

2009007 - PRRIP Cook Tract

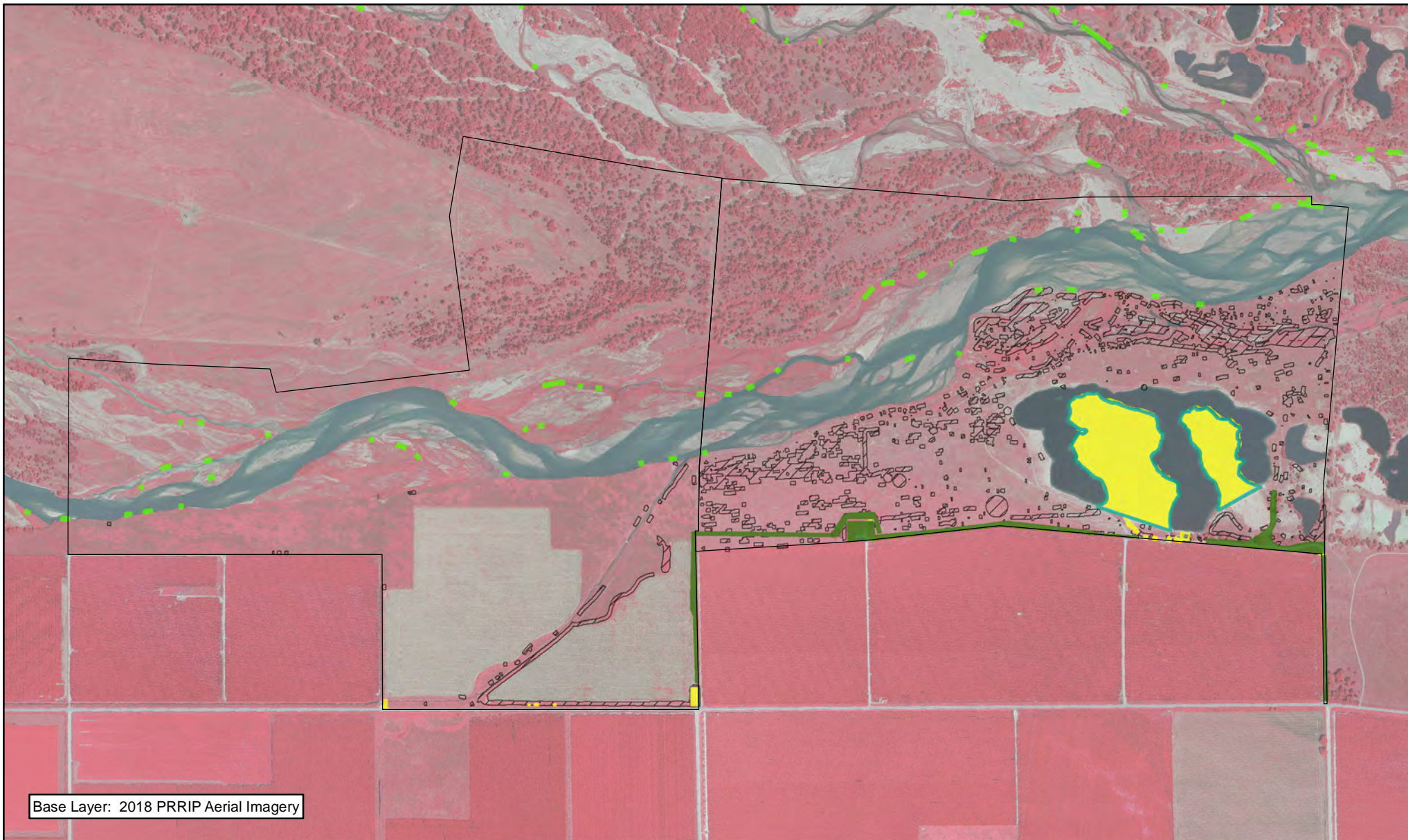
2018 Plum Creek Complex Budget Summary

2018 Expenditures by Program Budget Line Item

Priority Area	Item	Budget Line Item	Estimated Expenditure	2018 Expenditure
Species Habitat	Target Species Sand and Water Habitat	LP-2	\$13,305	\$8,545
Species Habitat	Whooping Crane Wet Meadow/ Grassland Habitat	LP-2	\$5,000	\$264
Subtotal			\$18,305	\$8,809
Operations and Maintenance	Property Maintenance and Agricultural Operations	LP-4	\$17,100	\$26,881
Total			\$35,405	\$35,690

2018 Revenues







Tract	Item	Estimated Income	2018 Income
Tract 2009003	NPPD Habitat Lease	\$500	\$500
Tract 2009003	Grazing Income	\$5,000	\$3,326
Tract 2009007	Haying Income	\$2,350	\$3,018
Tract 2009007	Cropland Income	\$5,550	\$5,550
Tract 2009007	Grazing Income		\$915
Total		\$12,900	\$13,309




Base Layer: 2018 PRRIP Aerial Imagery



Legend

- | | |
|--|--|
|  Parking Lot Construction |  Herbicide |
|  PVWMA Phrag Control |  Preemergent |
|  Shredding/Mowing |  Noxious Weed Control |



 Miles
0.5

PLUM CREEK COMPLEX FY 2018 ACTIVITIES

Date: 2/12/2019
By: TRT

Figure 8

2018 Cottonwood Ranch Complex Annual Work Plan Report

Platte River Recovery Implementation Program

For More Information Contact: Jason Farnsworth, farnsworthj@headwaterscorp.com, (308) 237-5728

General Priorities

- * **Good Neighbor Policy** - Conducted all actions in accordance with Program's good neighbor policy.

Adaptive Management Priorities

- * **Species Monitoring** – Monitored whooping crane use of riverine and off-channel palustrine wetland roosting habitat and least tern and piping plover use and productivity at off-channel sand and water nesting sites.

Species Habitat Priorities

- * **Maintain Target Species Sand and Water Habitat** – Application of pre-emergent herbicide on OCSW peninsula to maintain tern and plover nesting habitat. Controlled in-channel vegetation to maintain suitable unobstructed view widths for whooping cranes.
- * *Construction of Broad-Scale Recharge Water Supply and Whooping Crane Habitat Project – Construction of berms and water control structures to allow for approximately 400 acres of ponded surface water in wet meadow areas south of the channel on Tracts 2008002 and 2010001. Budget for this work item is included in a Water Plan line item.*
- * *Management of grassland/wet meadow habitat for whooping cranes and sandhill cranes – Grazing continued on Lloyd Island for the 2018 grazing season. Wet meadow areas in Section 16 T8N R19W (Tracts 2008002 and 2010001) were not grazed/hayed during the 2018 due to Broad -Scale Recharge Water Supply and Whooping Crane Habitat Project construction. Grazing/haying management will resume as soon as project is complete.*
- * **Protecting Other Species of Concern** – Identified presence of and determine methods to protect other species of concern during implementation of land-related activities.

Operations and Maintenance Priorities

- * **Basic Property Maintenance Obligations and Needs** – Fulfilled basic property ownership obligations and needs on Tracts 2008002, 2009006, and 2010001 including fence and road maintenance and noxious weed control.
- * **Agricultural Operations** – Oversight of grazing/ haying leases on Tracts 2009006 and 2010001.

NOTE: The budget section of this work plan only contains information for work items that are specific to these tracts. As such, tract-specific research and monitoring actions are presented but system-scale actions like target species and geomorphology/vegetation monitoring are not.

Priority Area: General

Item(s): *Complex Land Interest and Complex-Level Planning*

No.	Management Activities	Budget Line Item	Completed	Cost (Estimated)	Actual Cost
CR 1	Coordination of Program land actions with neighboring landowners	N/A	Yes	N/A	N/A

Priority Area: Species Habitat

Item(s): *Improve Target Species Sand and Water Habitat*

No.	Management Activities	Budget Line Item	Completed	Cost (Estimated)	Actual Cost
CR 2	Tract 2008002 Pre-emergent herbicide application on in-channel tern and plover nesting habitat and OCSW complex	LP-2	Yes	\$2,800	\$4,060
CR 3	Disking if necessary to provide in-channel vegetation control - (~176	LP-2	Yes	\$13,730	\$18,600

Priority Area: Species Habitat**Item(s):** *Whooping Crane Grassland / Wet Meadow Habitat*

No.	Management Activities	Budget Line Item	Completed	Cost (Estimated)	Actual Cost
CR 4	Tract 2010001 Annual electrical service fee at two irrigation wells to supplement water to wetland	LP-2	Yes	\$8,700	\$1,820

Item(s): Other Species of Concern

No.	Management Activities	Budget Line Item	Completed	Cost (Estimated)	Actual Cost
CR 5	Habitat and species surveys on properties where work will occur	N/A	Yes	N/A	N/A
CR 6	Coordination with USFWS and NGPC to identify and mitigate potential impacts associated with land activities	N/A	Yes	N/A	N/A

Priority Area: Operations and Maintenance**Item(s):** *Basic Property Maintenance Obligations and Needs*

No.	Management Activities	Budget Line Item	Completed	Cost (Estimated)	Actual Cost
CR 7	Fence Replacement - (~10,118 LF)	LP-4	No	\$28,500	\$0
CR 8	Fence and road maintenance	LP-4	Yes	\$2,500	\$6,074
CR 9	Noxious weed control	LP-4	Yes	\$7,500	\$9,845
CR 10	Mowing	LP-4	No	\$1,600	\$0

Priority Area: Operations and Maintenance

Item(s): *Agricultural Operations*

No.	Management Activities	Budget Line Item	Completed	Cost (Estimated)	Actual Cost
CR 11	Tract 2009006 grazing lease oversight	N/A	Yes	N/A	N/A
CR 12	Tract 2010001 grazing lease oversight	N/A	Yes	N/A	N/A
CR 13	Tract 2010001 haying lease oversight	N/A	Yes	N/A	N/A

Priority Area: *Unplanned Expenses*

Tract No.	Management Activities	Item(s):	Budget Line Item	Actual Cost
2010001	Irrigation well inspection and replace controller	Maintain Suitable	LP-4	\$1,243

Property Identification Key:

2008002 - NPPD Cottonwood Ranch

2009006 - PRRIP Stall Tract

2010001 - PRRIP Morse Tract

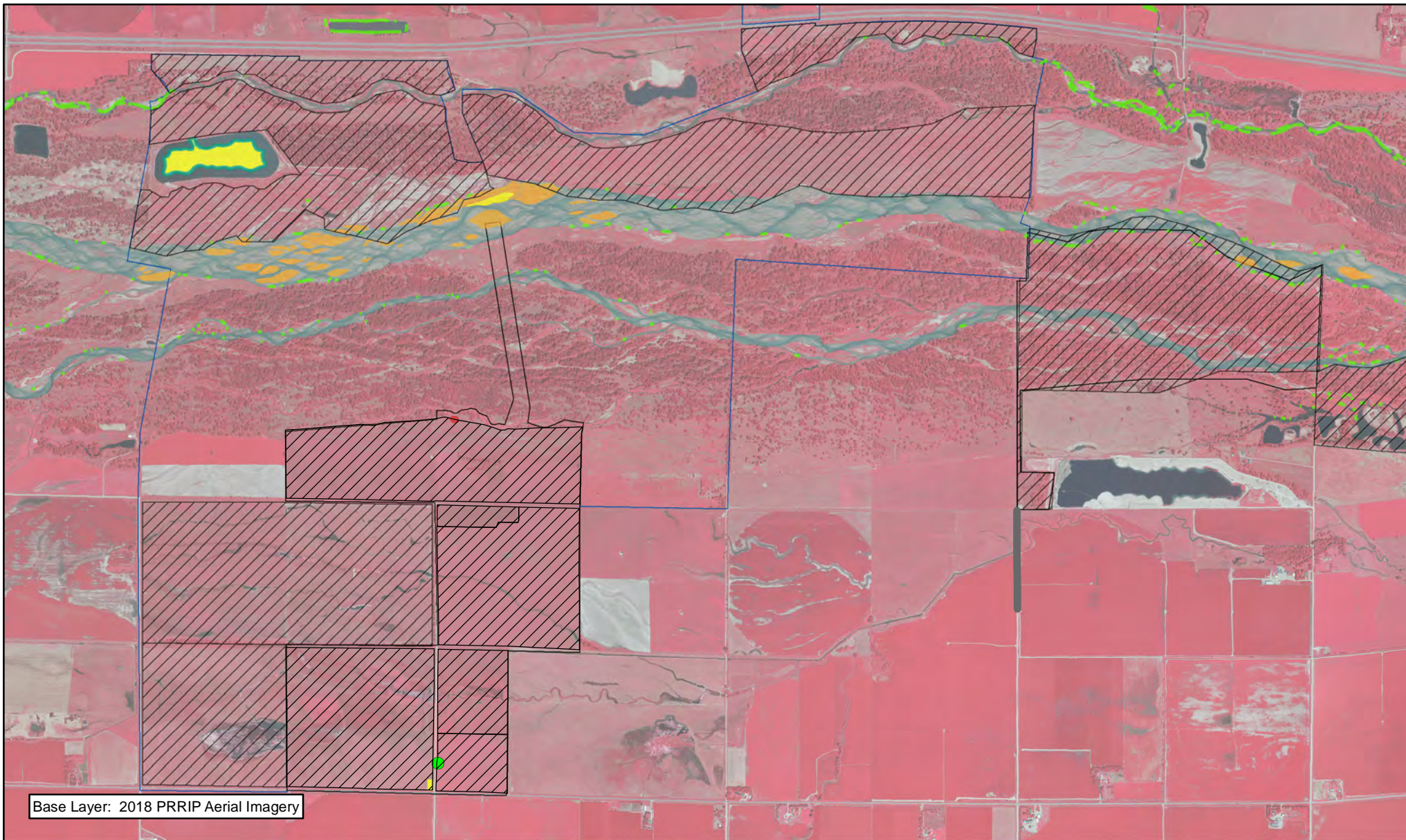
2018 Cottonwood Ranch Complex Budget Summary

2018 Expenditures by Program Budget Line Item

Priority Area	Item	Budget Line Item	Estimated Expenditure	2018 Expenditure
Adaptive Management & Species Habitat	Target Species Sand and Water Habitat	LP-2	\$16,530	\$22,660
Species Habitat	Whooping Crane Wet Meadow/ Grassland Habitat	LP-2	\$8,700	\$1,820
Subtotal			\$25,230	\$24,480
Operations and Maintenance	Property Maintenance and Agricultural Operations	LP-4	\$40,100	\$17,162
Total			\$65,330	\$41,642

2018 Revenues

Tract	Item	Estimated Income	2018 Income
Tract 2009006	Grazing Income	\$2,000	\$4,000
Tract 2010001	Grazing Income	\$0	\$6,505
Tract 2010001 SE 1/4	Grazing Income	\$0	\$3,360
Tract 2010001	Haying Income	\$2,500	\$3,192
Total		\$4,500	\$17,057



Legend

- | | |
|--|---|
| ● Well Repair | Disking |
| Road Maintenance | Noxious Weed Control |
| Fence Repair | Herbicide |
| PVWMA Phrag Control | Preemergent |
| Parking Lot Construction | |



Miles

1

COTTONWOOD RANCH COMPLEX FY 2018 ACTIVITIES

Date: 2/12/2019
By: TRT

Figure 9

2018 Elm Creek Complex Annual Work Plan Report

Platte River Recovery Implementation Program

For More Information Contact: Jason Farnsworth, farnsworthj@headwaterscorp.com, (308) 237-5728

General Priorities

- * **Good Neighbor Policy** - Conducted all actions in accordance with Program's good neighbor policy.

Adaptive Management Priorities

- * **Species Monitoring** – Monitored whooping crane use of in-channel roosting habitat and least tern and piping plover use and productivity at off-channel sand and water nesting sites.

Species Habitat Priorities

- * **Maintain Target Species Sand and Water Habitat** – Controlled in-channel vegetation to maintain suitable unobstructed view widths for whooping cranes.
- * **Protecting Other Species of Concern** – Identified presence of and determine methods to protect other species of concern during implementation of land-related activities.

Operations and Maintenance Priorities

- * **Basic Property Maintenance Obligations and Needs** – Fulfilled basic property ownership obligations and needs on Tracts 2009002, 2009005, 2012001 and 2012002 including fence and road maintenance and noxious weed control.
- * **Agricultural Operations** – Oversight of grazing/ haying leases on Tracts 2009005, 2012001 and 2012002.

NOTE: The budget section of this work plan only contains information for work items that are specific to these tracts. As such, tract-specific research and monitoring actions are presented but system-scale actions like target species and geomorphology/vegetation monitoring are not.

Priority Area: General**Item(s):** *Complex Land Interest and Complex-Level Planning*

No.	Management Activities	Budget Line Item	Completed	Cost (Estimated)	Actual Cost
EC 1	Coordination of Program land actions with neighboring landowners	N/A	Yes	N/A	N/A

Priority Area: Adaptive Management & Target Species Habitat**Item(s):** *Tern, Plover and Whooping Crane Riverine Habitat Experiments*

No.	Management Activities	Budget Line Item	Completed	Cost (Estimated)	Actual Cost
EC 2	In-channel cross disking (below diversion) and overbank mowing to maintain active channel and unobstructed view widths (247 acres)	LP-2	Yes	\$19,300	\$16,050

Priority Area: Species Habitat**Item(s):** *Whooping Crane Grassland / Wet Meadow Habitat*

No.	Management Activities	Budget Line Item	Completed	Cost (Estimated)	Actual Cost
EC 3	Tract 2009005 Prescribed burn (45 ac)	LP-2	No	\$1,965	\$0
EC 4	Tract 2012001 Prescribed burn (60 ac)	LP-2	No	\$2,615	\$0
EC 5	Tract 2012002 Prescribed burn (193 ac)	LP-2	No	\$8,415	\$0

Priority Area: Species Habitat**Item(s): Other Species of Concern**

No.	Management Activities	Budget Line Item	Completed	Cost (Estimated)	Actual Cost
EC 6	Habitat and species surveys on properties where work will occur	N/A	Yes	N/A	N/A
EC7	Coordination with USFWS and NGPC to identify and mitigate potential impacts associated with land activities	N/A	Yes	N/A	N/A

Priority Area: Operations and Maintenance**Item(s): Basic Property Maintenance Obligations and Needs**

No.	Management Activities	Budget Line Item	Completed	Cost (Estimated)	Actual Cost
EC8	Tract 2009002 Dumpsite Cleanup	LP-4	Yes	\$10,000	\$5,133
EC 9	Tract 2009002 building utilities and maintenance	LP-4	Yes	\$2,000	\$1,917
EC 10	Fence and road maintenance	LP-4	Yes	\$3,500	\$4,207
EC 11	Mowing	LP-4	Yes	\$1,500	\$1,655
EC 12	Noxious weed control	LP-4	Yes	\$17,000	\$16,329

Priority Area: Operations and Maintenance**Item(s): Agricultural Operations**

No.	Management Activities	Budget Line Item	Completed	Cost (Estimated)	Actual Cost
EC 13	Tract 2009002 Crop oversight	N/A	Yes	N/A	N/A
EC 14	Tract 2009005 grazing lease oversight	N/A	Yes	N/A	N/A
EC 15	Tract 2012001 haying lease oversight	N/A	Yes	N/A	N/A
EC 16	Tract 2012002 grazing lease oversight	N/A	Yes	N/A	N/A

Property Identification Key:

2009002 – PRRIP Bartels Tract

2009005 – PRRIP McCormick Tract

2012001 – PRRIP Sullwold Tract

2012002 – PRRIP Johns Tract

2015003 – Blue Hole East

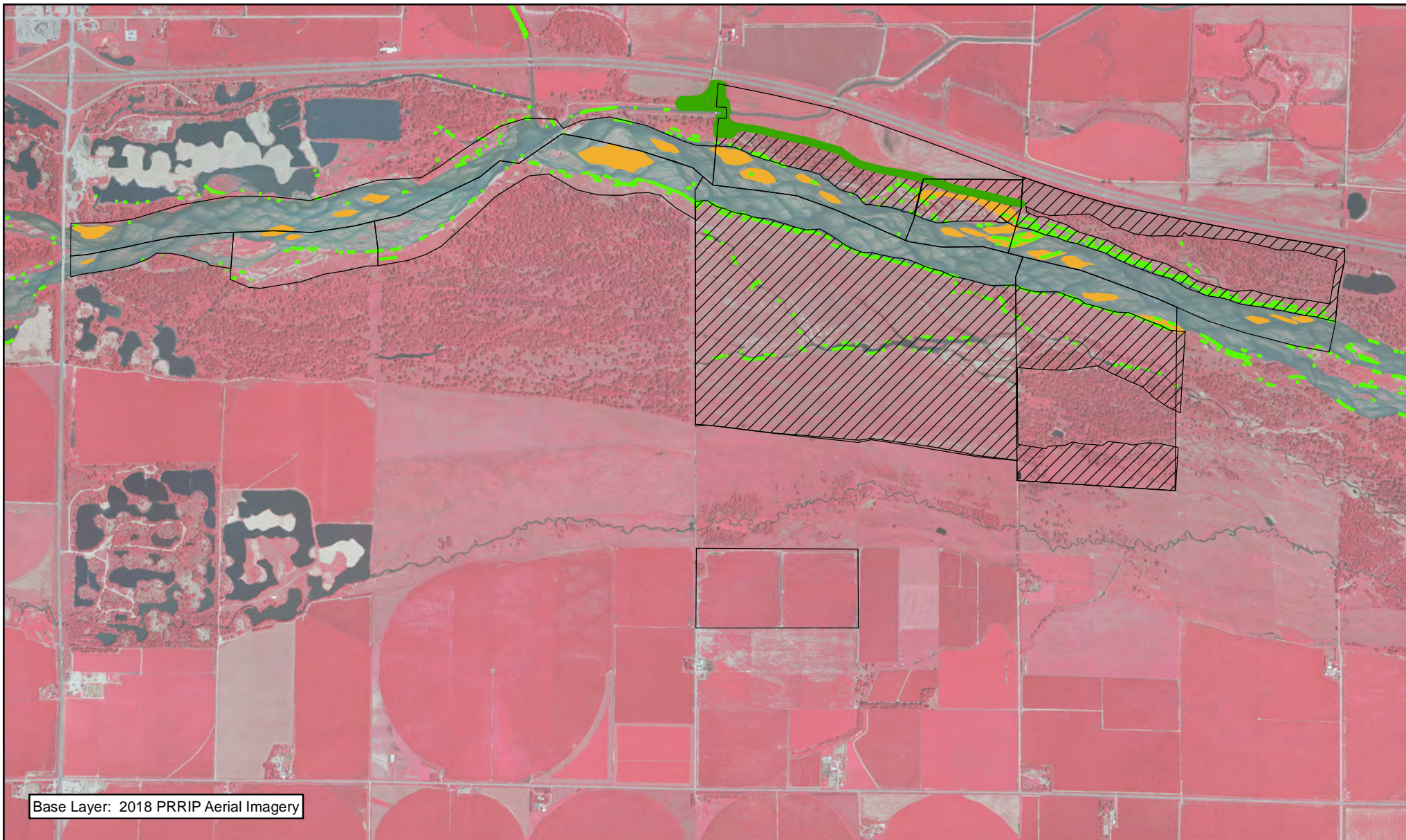
2018 Elm Creek Complex Budget Summary

2018 Expenditures by Program Budget Line Item

Priority Area	Item	Budget Line Item	Estimated Expenditure	2018 Expenditure
Adaptive Management & Species Habitat	Target Species Sand and Water Habitat	LP-2	\$19,300	\$16,050
Species Habitat	Whooping Crane Wet Meadow/ Grassland Habitat	LP-2	\$12,995	\$0
		Subtotal	\$32,295	\$16,050
Operations and Maintenance	Property Maintenance and Agricultural Operations	LP-4	\$34,000	\$29,241
		Total	\$66,295	\$45,291

2018 Revenues

Tract	Item	Estimated Income	2018 Income
Tract 2009002	Crop Income	\$4,175	\$4,350
Tract 2009005	Grazing Income	\$5,000	\$2,500
Tract 2012001	Haying Income	\$1,645	\$0
Tract 2012002	Grazing Income	\$6,000	\$8,100
Total		\$16,820	\$14,950



Legend

- Road Maintenance
- Diking
- Shredding/Mowing
- Noxious Weed Control
- PVWMA Phrag Control



1 Miles

ELM CREEK COMPLEX FY 2018 ACTIVITIES

Date: 2/12/2019
By: TRT

Figure 10

2018 Pawnee Complex Annual Work Plan Report

Platte River Recovery Implementation Program

For More Information Contact: Jason Farnsworth, farnsworthj@headwaterscorp.com, (308) 237-5728

General Priorities

- * **Good Neighbor Policy** - Conducted all actions in accordance with Program's good neighbor policy.

Adaptive Management Priorities

- * **Species Monitoring** – Monitored whooping crane use of in-channel roosting habitat.

Species Habitat Priorities

- * **Maintain Target Species Sand and Water Habitat** – Controlled in-channel vegetation to maintain suitable unobstructed view widths for whooping cranes. Removed vegetation from overbank areas adjacent to the channel to promote channel widening through lateral erosion.
- * **Protecting Other Species of Concern** – Identified presence of and determine methods to protect other species of concern during implementation of land-related activities.

Operations and Maintenance Priorities

- * **Basic Property Maintenance Obligations and Needs** – Fulfilled basic property ownership obligations and needs on Tracts 2014002 and 2015002.
- * **Agricultural Operations** – Oversight of grazing/ haying leases on Tracts 2014002 and 2015002.

NOTE: The budget section of this work plan only contains information for work items that are specific to these tracts. As such, tract-specific research and monitoring actions are presented but system-scale actions like target species and geomorphology/vegetation monitoring are not.

Priority Area: General**Item(s):** *Complex Land Interest and Good Neighbor Policy*

No.	Management Activities	Budget Line Item	Completed	Cost (Estimated)	Actual Cost
PAW 1	Coordination of Program land actions with neighboring landowners	N/A	Yes	N/A	N/A

Priority Area: Adaptive Management & Target Species Habitat**Item(s):** *Tern, Plover and Whooping Crane Riverine Habitat Experiments*

No.	Management Activities	Budget Line Item	Completed	Cost (Estimated)	Actual Cost
PAW 2	Herbicide treatment on south bank to kill vegetation prior to disking	LP-2	Yes	\$2,000	\$1,637
PAW 3	In-channel cross disking and overbank mowing to maintain active channel and unobstructed view widths (100 ac)	LP-2	Yes	\$7,800	\$24,450

Priority Area: Species Habitat**Item(s):** *Other Species of Concern*

No.	Management Activities	Budget Line Item	Completed	Cost (Estimated)	Actual Cost
PAW 4	Habitat and species surveys on properties where work will occur	N/A	Yes	N/A	N/A
PAW 5	Coordination with USFWS and NGPC to identify and mitigate potential impacts associated with land activities	N/A	Yes	N/A	N/A

Priority Area: Operations and Maintenance**Item(s):** *Basic Property Maintenance Obligations and Needs*

No.	Management Activities	Budget Line Item	Completed	Cost (Estimated)	Actual Cost
PAW 6	Noxious weed control - (~675 acres)	LP-4	Yes	\$3,000	\$8,959
PAW 7	Fence and road maintenance	LP-4	No	\$3,000	\$0
PAW 8	Seed and Planting Cost of Alfalfa on Tract 2015002 Field - (~12 ac)	LP-4	No	\$1,800	\$0

Priority Area: Operations and Maintenance**Item(s):** *Agricultural Operations*

No.	Management Activities	Budget Line Item	Completed	Cost (Estimated)	Actual Cost
PAW 9	Tract 2014002 oversight	N/A	Yes	N/A	N/A
PAW 10	Tract 2015002 oversight	N/A	Yes	N/A	N/A

Priority Area: Unplanned Expenses

Tract No.	Management Activities	Item(s):	Budget Line Item	Actual Cost
Agreement #	P17-011 Final Payment for Tree Clearing	Tern, Plover and	LP-2	\$8,875

Property Identification Key:

2014002 - PRRIP Volentine Tract

2015002 - PRRIP BELF Tract

Agreement #10 (1605) - P. Broadfoot

Agreement #11 (1008) - NE DOR Lease

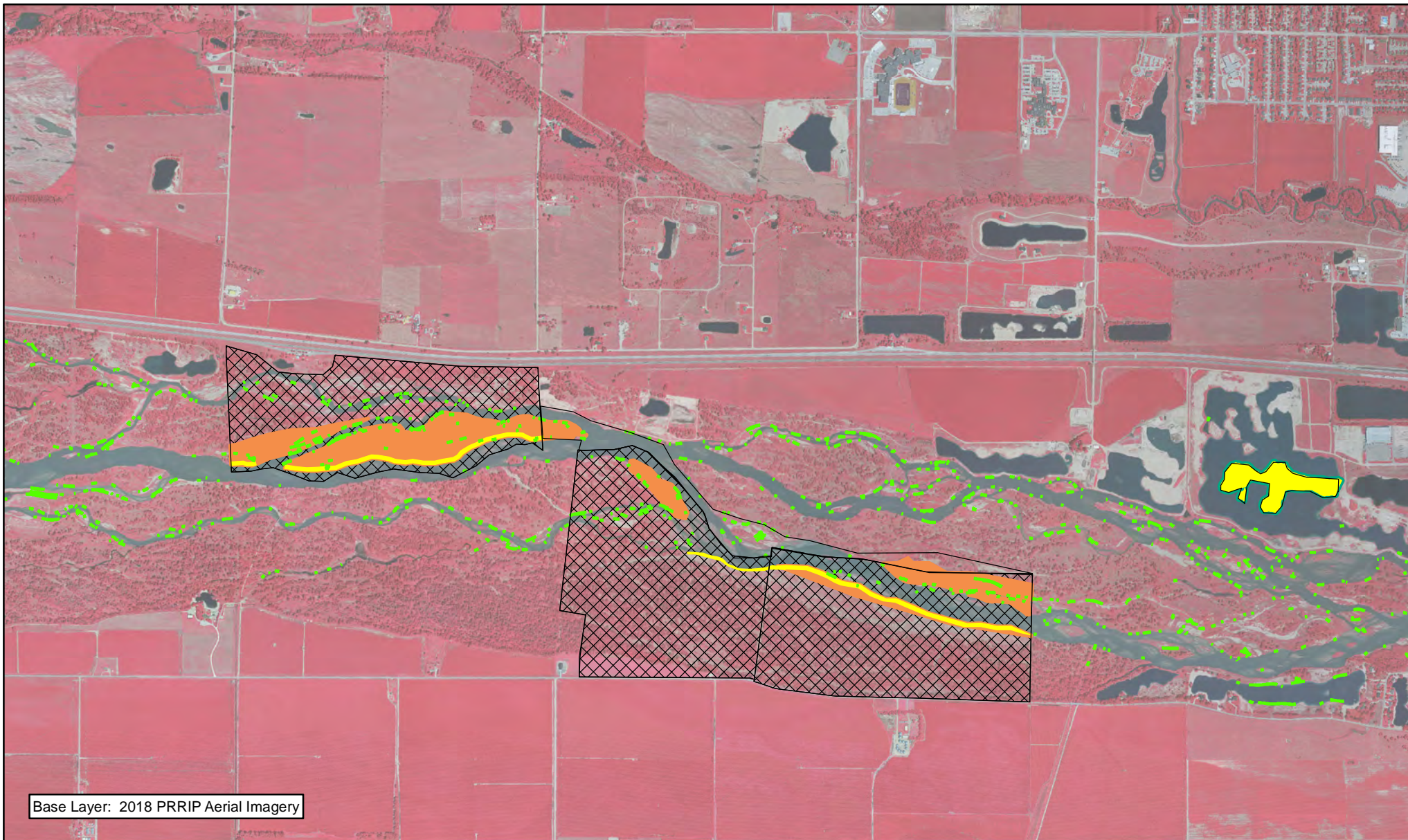
2018 Pawnee Complex Budget Summary

2018 Expenditures by Program Budget Line Item

Priority Area	Item	Budget Line Item	Estimated Expenditure	2018 Expenditure
Adaptive Management & Species Habitat	Target Species Sand and Water Habitat	LP-2	\$9,800	\$34,962
Operations and Maintenance	Property Maintenance and Agricultural Operations	LP-4	\$7,800	\$8,959
		Total	\$17,600	\$43,921

2018 Revenues

Tract	Item	Estimated Income	2018 Income
Tract 2015002	Crop Income	\$720	\$540
Tract 2015002	Grazing Income	\$2,000	\$2,325
Tract 2014002	Grazing Income	\$2,000	\$2,325
	Total	\$4,720	\$5,190



Legend

- PVWMA Phrag Control
- Noxious Weed Control
- Disking
- Herbicide
- Preemergent



1 Miles

PAWNEE COMPLEX
FY 2018 ACTIVITIES

Date: 2/12/2019
By: TRT

Figure 11

2018 Fort Kearny Complex Annual Work Plan Report

Platte River Recovery Implementation Program

For More Information Contact: Jason Farnsworth, farnsworthj@headwaterscorp.com, (308) 237-5728

General Priorities

- * **Good Neighbor Policy** - Conducted all actions in accordance with Program's good neighbor policy.

Adaptive Management Priorities

- * **Species Monitoring** – Monitored whooping crane use of off-channel palustrine wetlands and in-channel roosting habitat.

Species Habitat Priorities

- * **Maintain Target Species Sand and Water Habitat** – Controlled in-channel vegetation to maintain suitable unobstructed view widths for whooping cranes. Removed vegetation from overbank areas adjacent to the channel to promote channel widening through lateral erosion.
- * **Protecting Other Species of Concern** – Identified presence of and determine methods to protect other species of concern during implementation of land-related activities.

Operations and Maintenance Priorities

- * **Basic Property Maintenance Obligations and Needs** – Fulfilled basic property ownership obligations and needs on Tracts 2008001, 2009001, 2009004, 2010003, 2012003 and 2015001 including fence and road maintenance and noxious weed control.
- * **Agricultural Operations** – Oversight of grazing/ haying leases on Tracts 2008001, 2012003, 2009001, 2009004, and 2015001.

NOTE: The budget section of this work plan only contains information for work items that are specific to these tracts. As such, tract-specific research and monitoring actions are presented but system-scale actions like target species and geomorphology/vegetation monitoring are not.

Priority Area: General**Item(s):** *Complex Land Interest and Good Neighbor Policy*

No.	Management Activities	Budget Line Item	Completed	Cost (Estimated)	Actual Cost
FK 1	Coordination of Program land actions with neighboring landowners	N/A	Yes	N/A	N/A

Priority Area: Species Habitat**Item(s):** *Improve Target Species Sand and Water Habitat*

No.	Management Activities	Budget Line Item	Completed	Cost (Estimated)	Actual Cost
FK 2	Disking if necessary to provide in-channel vegetation control -(~83 ac)	LP-2	No	\$6,475	\$0

Priority Area: Species Habitat**Item(s):** *Whooping Crane Grassland / Wet Meadow Habitat*

No.	Management Activities	Budget Line Item	Completed	Cost (Estimated)	Actual Cost
FK 3	Tract 2015001 Clean up Debris from 2009 Wildfire on North Channel	LP-2	Yes	\$20,000	\$8,748
FK 4	Tract 2009001 Annual electrical service fee at irrigation well to supplement water to wetland	LP-2	Yes	\$3,000	\$3,058
FK 5	Tract 2008001-South Prescribe burn (140 ac)	LP-2	No	\$6,105	\$0
FK 6	Tract 2008001-Island Prescribe burn (95 ac)	LP-2	Yes	\$4,140	\$7,232
FK 7	Tract 2010003-Island Prescribe burn (77 ac)	LP-2	Yes	\$3,360	\$7,232
FK 8	Tract 2009004 Prescribe burn (147 ac)	LP-2	Yes	\$6,410	\$7,760
FK 9	Tract 2015001 SW unit Prescribe burn (180 ac)	LP-2	yes	\$7,850	\$9,502

Priority Area: Species Habitat**Item(s):** *Other Species of Concern*

No.	Management Activities	Budget Line Item	Completed	Cost (Estimated)	Actual Cost
FK 10	Habitat and species surveys on properties where work will occur	N/A	Yes	N/A	N/A
FK 11	Coordination with USFWS and NGPC to identify and mitigate potential impacts associated with land activities	N/A	Yes	N/A	N/A

Priority Area: Operations and Maintenance**Item(s):** *Basic Property Maintenance Obligations and Needs*

No.	Management Activities	Budget Line Item	Completed	Cost (Estimated)	Actual Cost
FK 12	Tract 2008001- Decommission Monitoring Wells in South Grassland	LP-4	Yes	\$3,000	\$1,320
FK 13	Crushed Concrete at Tract 2012003 & Tract 2009004 Parking Areas	LP-4	Yes	\$6,500	\$7,566
FK 14	Tract 2009004 & 2015001 Electricity	LP-4	Yes	\$1,500	\$739
FK 15	Noxious weed control	LP-4	Yes	\$8,100	\$21,474
FK 16	Fence and road maintenance	LP-4	Yes	\$2,500	\$8,337
FK 17	Mowing	LP-4	No	\$1,500	\$0

Item(s): *Agricultural Operations*

No.	Management Activities	Budget Line Item	Completed	Cost (Estimated)	Actual Cost
FK 18	Tract 2008001 grazing lease oversight	N/A	Yes	N/A	N/A
FK 19	Tract 2012003 grazing lease oversight	N/A	Yes	N/A	N/A
FK 20	Tract 2015001 grazing lease oversight	N/A	Yes	N/A	N/A

Priority Area: *Unplanned Expenses*

Tract No.	Management Activities	Item(s):	Budget Line Item	Actual Cost
2008001	Rx Fire Support with airboat	Whooping Crane	LP-2	\$1,613

Property Identification Key:

2008001 – PRRIP Wyoming Property

2009001 – PRRIP Fox Tract

2009004 – PRRIP Hostetler Tract

2010003 – PRRIP Sherrerd/Clark Easement

2012003 – PRRIP Blessing Tract

2015001 – PRRIP Speidell Tract

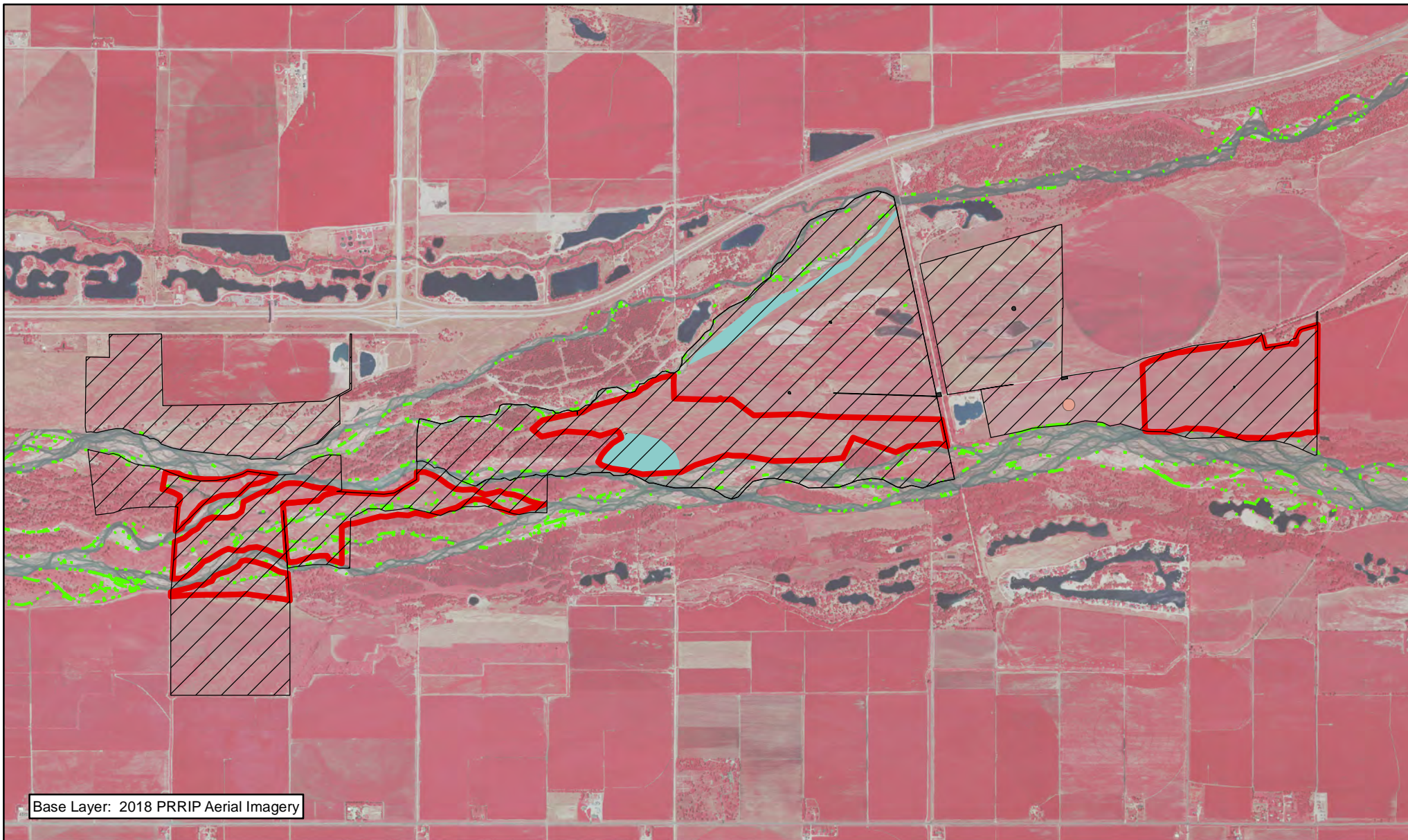
2018 Ft Kearny Complex Budget Summary

2018 Expenditures by Program Budget Line Item









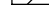
Priority Area	Item	Budget Line Item	Estimated Expenditure	2018 Expenditure
Species Habitat	Improve Sand and Water Habitat	LP-2	\$6,475	\$0
Species Habitat	Whooping Crane Wet Meadow/ Grassland Habitat	LP-2	\$50,865	\$45,145
Subtotal			\$57,340	\$45,145
Operations and Maintenance	Property Maintenance and Agricultural Operations	LP-4	\$23,100	\$39,436
Total			\$80,440	\$84,581

2018 Revenues


Tract	Item	Estimated Income	2018 Income
Tract 2008001 N & 2012003	Grazing Income	\$5,500	\$5,250
Tract 2008001 S	Haying Income	\$3,770	\$6,991
Tract 2009001	Grazing Income	\$0	\$7,500
Tract 2009004	Grazing Income	\$9,625	\$11,550
Tract 2012003	Cropland Income	\$1,850	\$1,800
Tract 2015001	Grazing Income	\$9,625	\$16,500
Total		\$30,370	\$49,591



Legend

- | | |
|---|---|
|  Road Maintenance |  Well Repair |
|  PVWMA Phrag Control |  Solar Livestock Water |
|  Aboveground Tree Clearing | |
|  Preemergent | |
|  Concrete | |
|  Prescribed Fire | |
|  Noxious Weed Control | |



 Miles
1

**FT. KEARNY COMPLEX
FY 2018 ACTIVITIES**

Date: 2/12/2019
By: TRT

Figure 12

2018 Minden – Gibbon Management Agreement Annual Work Plan Report

Platte River Recovery Implementation Program

For More Information Contact: Jason Farnsworth, farnsworthj@headwaterscorp.com, (308) 237-5728

Adaptive Management Priorities

- * **Species Monitoring** – Monitored whooping crane use of in-channel roosting habitat.

Species Habitat Priorities

- * **Maintain Target Species Sand and Water Habitat** – Controlled in-channel vegetation to maintain suitable unobstructed view widths for whooping cranes.
- * **Protecting Other Species of Concern** – Identified presence of and determine methods to protect other species of concern during implementation of land-related activities.

Priority Area: Species Habitat

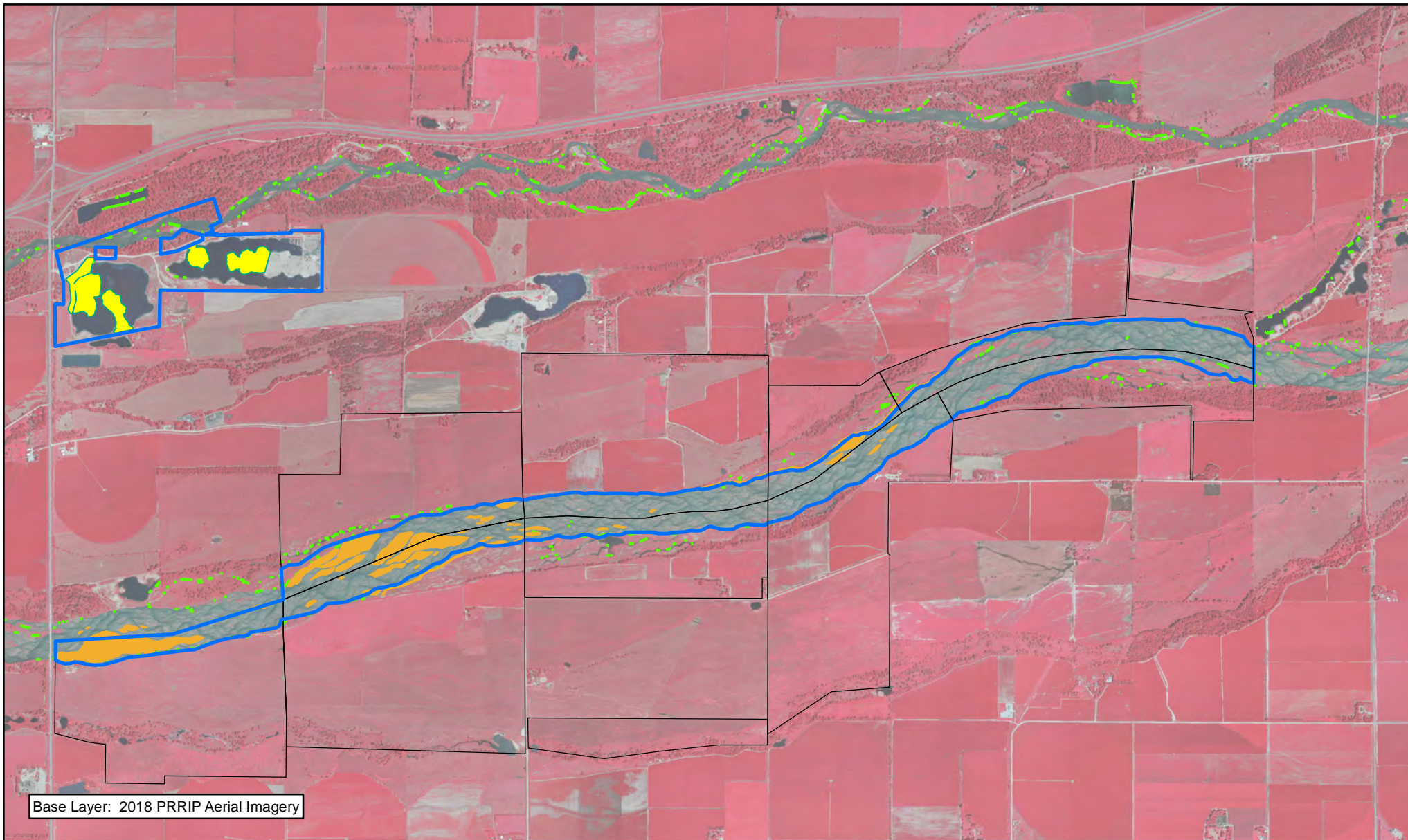
Item(s): *Improve Target Species Sand and Water Habitat*

No.	Management Activities	Budget Line Item	Completed	Cost (Estimated)	Actual Cost
M-G 1	Disking if necessary to provide in-channel vegetation control -(~153 ac)	LP-2	Yes	\$12,000	\$13,780

2018 Minden-Gibbon Management Agreement Budget Summary

2018 Expenditures by Program Budget Line Item

Priority Area	Item	Budget Line Item	Estimated Expenditure	2018 Expenditure
Species Habitat	Improve Target Species Sand and Water Habitat	LP-2	\$12,000	\$13,780
		Total	\$12,000	\$13,780







Base Layer: 2018 PRRIP Aerial Imagery




PLATTE RIVER
RECOVERY IMPLEMENTATION PROGRAM

Legend

-  Chemical
-  Disking
-  Preemergent
-  Herbicide



 Miles

1

**MINDEN-GIBBON
COMPLEX
FY 2018 ACTIVITIES**

Date: 2/12/2019
By: TRT

Figure 13

2018 Clark Island Complex Annual Work Plan Report

Platte River Recovery Implementation Program

For More Information Contact: Jason Farnsworth, farnsworthj@headwaterscorp.com, (308) 237-5728

General Priorities

- * ***Good Neighbor Policy*** - Conducted all actions in accordance with Program's good neighbor policy.

Adaptive Management Priorities

- * ***Species Monitoring*** – Monitored whooping crane use of in-channel roosting habitat.

Species Habitat Priorities

- * ***Maintain Target Species Sand and Water Habitat*** – Control in-channel vegetation to maintain suitable unobstructed view widths for whooping cranes. Remove vegetation from overbank areas adjacent to the channel to promote channel widening through lateral erosion.
- * ***Protecting Other Species of Concern*** – Identified presence of and determine methods to protect other species of concern during implementation of land-related activities.

Operations and Maintenance Priorities

- * ***Basic Property Maintenance Obligations and Needs*** – Fulfilled basic property ownership obligations and needs on Tract 2018001.
- * ***Agricultural Operations*** – Oversight of grazing/ haying leases on Tract 2018001.

NOTE: The budget section of this work plan only contains information for work items that are specific to these tracts. As such, tract-specific research and monitoring actions are presented but system-scale actions like target species and geomorphology/vegetation monitoring are not.

Priority Area: General**Item(s):** *Complex Land Interest and Good Neighbor Policy*

No.	Management Activities	Budget Line Item	Completed	Cost (Estimated)	Actual Cost
CI 1	Coordination of Program land actions with neighboring landowners	N/A	Yes	N/A	N/A

Priority Area: Species Habitat**Item(s):** *Other Species of Concern*

No.	Management Activities	Budget Line Item	Completed	Cost (Estimated)	Actual Cost
CI 2	Habitat and species surveys on properties where work will occur	N/A	Yes	N/A	N/A
CI 3	Coordination with USFWS and NGPC to identify and mitigate potential impacts associated with land activities	N/A	Yes	N/A	N/A

Priority Area: Operations and Maintenance**Item(s):** *Basic Property Maintenance Obligations and Needs*

No.	Management Activities	Budget Line Item	Completed	Cost (Estimated)	Actual Cost
CI 4	Noxious weed control	LP-4	Yes		\$4,479
CI 5	Fence and road maintenance	LP-4	Yes		\$1,734
CI 6	Mowing	LP-4	Yes		\$1,313

Priority Area: Operations and Maintenance**Item(s): Agricultural Operations**

No.	Management Activities	Budget Line Item	Completed	Cost (Estimated)	Actual Cost
CI 7	Tract 2018001 Grazing oversight	N/A	Yes	N/A	N/A
CI 8	Tract 2018001 Cropland oversight	N/A	Yes	N/A	N/A

Priority Area: *Unplanned Expenses*

Tract No.	Management Activities	Item(s):	Budget Line Item	Actual Cost
2018001	Professional Services- Tow Crane Blind from Elm Creek	Basic Property	LP-4	\$1,125
2018001	Move and Install Solar Unit and Tanks from N. Binfield	Basic Property	LP-4	\$3,905
2018001	Prescribed Fire	Whooping Crane	LP-2	\$10,769

2018001 - PRRIP Dippel Tract

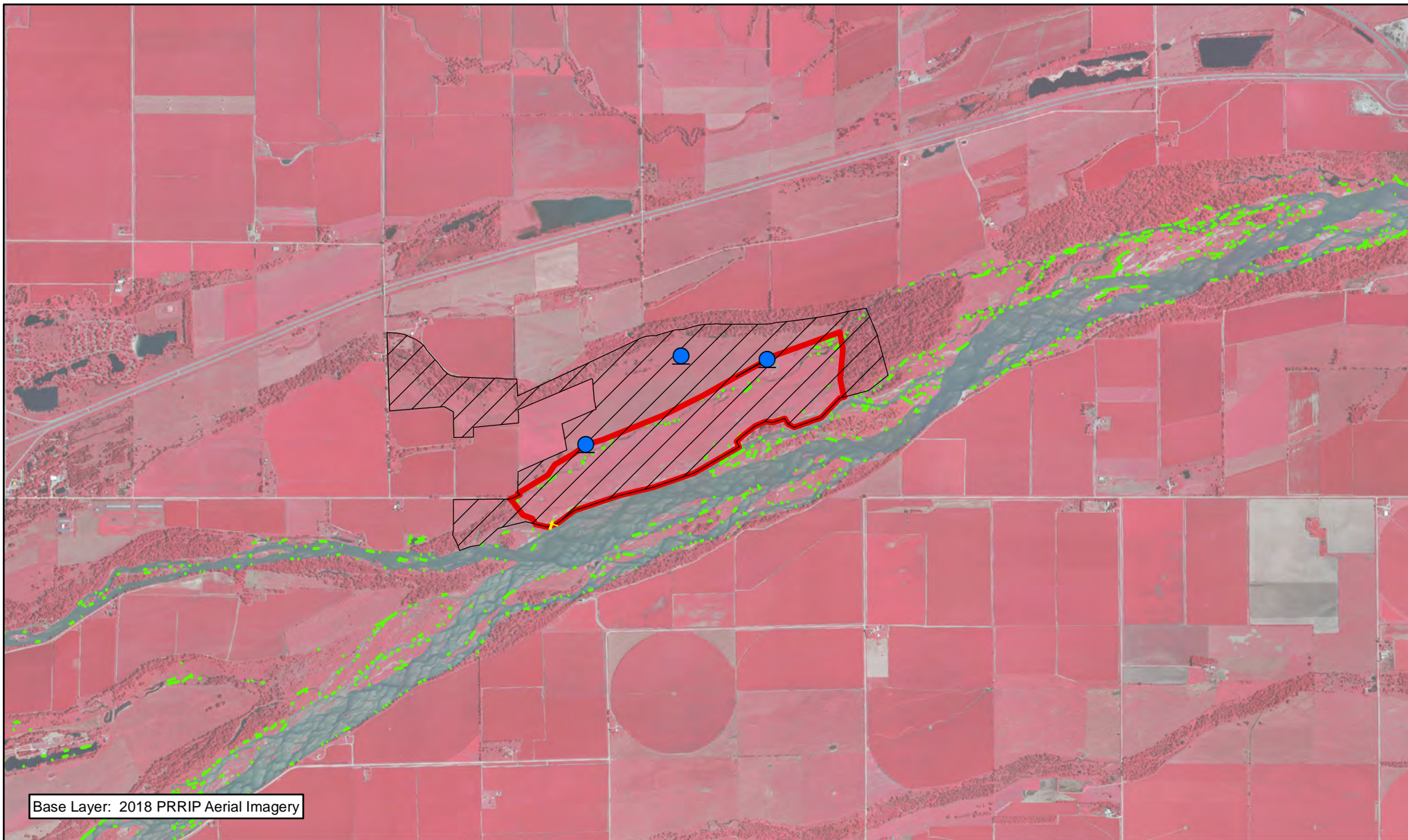
2018 Clark Island Complex Budget Summary

2018 Expenditures by Program Budget Line Item

Priority Area	Item	Budget Line Item	Estimated Expenditure	2018 Expenditure
Adaptive Management & Species Habitat	Target Species Sand and Water Habitat	LP-2	\$0	\$10,769
Operations and Maintenance	Property Maintenance and Agricultural Operations	LP-4	\$0	\$12,556
		Total	\$0	\$23,325

2018 Revenues

Tract	Item	Estimated Income	2018 Income
Tract 2018001	Crop Income		\$23,210
Tract 2018001	Grazing Income		\$7,150
	Total	\$0	\$30,360



Base Layer: 2018 PRRIP Aerial Imagery



Legend

- Privacy Fence
- Solar Livestock Water
- Parking Lot Construction
- PVWMA Phrag Control
- Prescribed Fire
- Noxious Weed Control



Miles
1

CLARK ISLAND COMPLEX FY 2018 ACTIVITIES

Date: 2/12/2019
By: TRT

Figure 14

2018 Shoemaker Island Complex Annual Work Plan Report

Platte River Recovery Implementation Program

For More Information Contact: Jason Farnsworth, farnsworthj@headwaterscorp.com, (308) 237-5728

General Priorities

- * **Good Neighbor Policy** - Conducted all actions in accordance with Program's good neighbor policy.

Adaptive Management Priorities

- * **Species Monitoring** – Monitored whooping crane use of palustrine wetlands and in-channel roosting habitat.

Species Habitat Priorities

- * **Maintain Target Species Sand and Water Habitat** – Controlled in-channel vegetation to maintain suitable unobstructed view widths for whooping cranes.
- * **Protecting Other Species of Concern** – Identified presence of and determine methods to protect other species of concern during implementation of land-related activities.

Operations and Maintenance Priorities

- * **Basic Property Maintenance Obligations and Needs** – Fulfilled basic property ownership obligations and needs on Tract 2010004 including fence and road maintenance and noxious weed control.
- * **Agricultural Operations** – Oversight of grazing/ haying leases on Tract 2010004

NOTE: The budget section of this work plan only contains information for work items that are specific to these tracts. As such, tract-specific research and monitoring actions are presented but system-scale actions like target species and geomorphology/vegetation monitoring are not.

Priority Area: General**Item(s):** *Complex Land Interest and Complex-Level Planning*

No.	Management Activities	Budget Line Item	Completed	Cost (Estimated)	Actual Cost
SI 1	Coordination of Program land actions with neighboring landowners	N/A	Yes	N/A	N/A

Priority Area: Species Habitat**Item(s):** *Improve Target Species Sand and Water Habitat*

No.	Management Activities	Budget Line Item	Completed	Cost (Estimated)	Actual Cost
SI 2	Disking if necessary to provide in-channel vegetation control - (~58 ac)	LP-2	No	\$4,525	\$0

Priority Area: Species Habitat**Item(s):** *Whooping Crane Grassland / Wet Meadow Habitat*

No.	Management Activities	Budget Line Item	Completed	Cost (Estimated)	Actual Cost
SI 3	Tract 2010004 Understory Clearing for Yellow Flag Iris Eradication	LP-2	Yes	\$12,000	\$9,962

Priority Area: Species Habitat**Item(s):** *Other Species of Concern*

No.	Management Activities	Budget Line Item	Completed	Cost (Estimated)	Actual Cost
SI 4	Habitat and species surveys on properties where work will occur	N/A	Yes	N/A	N/A
SI 5	Coordination with USFWS and NGPC to identify and mitigate potential impacts associated with land activities	N/A	Yes	N/A	N/A

Priority Area: Operations and Maintenance**Item(s):** *Basic Property Maintenance Obligations and Needs*

No.	Management Activities	Budget Line Item	Completed	Cost (Estimated)	Actual Cost
SI 6	Fence and road maintenance	LP-4	Yes	\$2,500	\$3,502
SI 7	Noxious weed control	LP-4	Yes	\$2,500	\$2,873
SI 8	Mowing	LP-4	No	\$1,500	\$0

Priority Area: Operations and Maintenance**Item(s):** *Agricultural Operations*

No.	Management Activities	Budget Line Item	Completed	Cost (Estimated)	Actual Cost
SI 9	Tract 2010004 grazing & haying lease oversight	N/A	Yes	N/A	N/A

Priority Area: Unplanned Expenses

Tract No.	Management Activities	Item(s):	Budget Line Item	Actual Cost
2010004	Electricity for Livestock well		LP-4	\$184

Property Identification Key:

2010004 – PRRIP Binfield Tract

2018 Shoemaker Island Complex Budget Summary

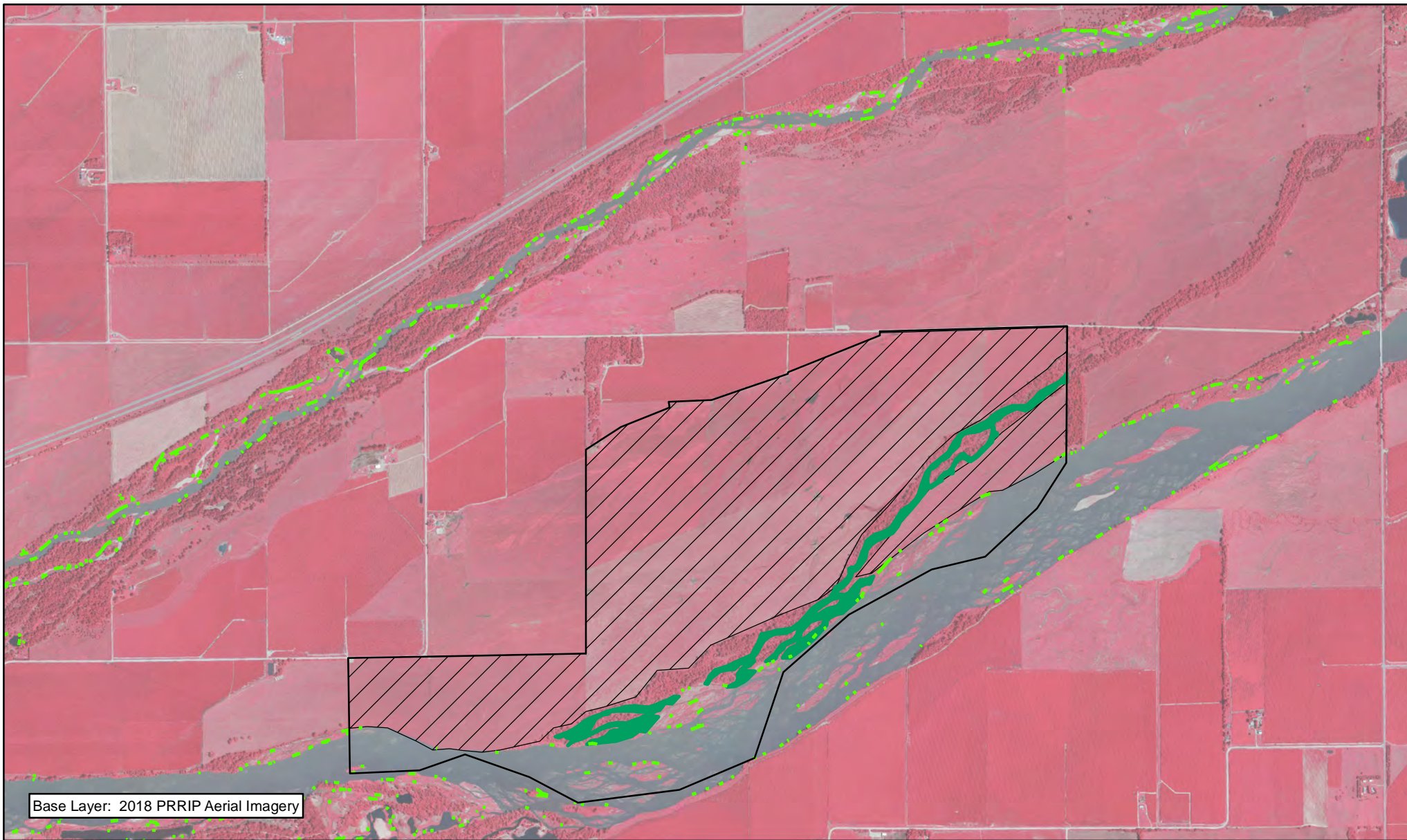
2018 Expenditures by Program Budget Line Item

Priority Area	Item	Budget Line Item	Estimated Expenditure	2018 Expenditure
Species Habitat	Improve Target Species Sand and Water Habitat	LP-2	\$4,525	\$0
Species Habitat	Whooping Crane Wet Meadow/ Grassland Habitat	LP-2	\$12,000	\$9,962
Subtotal			\$16,525	\$9,962

Operations and Maintenance	Property Maintenance and Agricultural Operations	LP-4	\$6,500	\$6,559
Total			\$23,025	\$16,521

2018 Revenues





Tract	Item	Estimated Income	2018 Income
Tract 2010004	Grazing & Haying Income	\$30,000	\$41,011
Total		\$30,000	\$41,011




Base Layer: 2018 PRRIP Aerial Imagery



Legend

-  Parking Lot Construction
-  Tree/Brush Mulching
-  PVWMA Phrag Control
-  Noxious Weed Control



 Miles

1

SHOEMAKER ISLAND COMPLEX FY 2018 ACTIVITIES

Date: 2/12/2019
By: TRT

Figure 15

2018 Water Properties Annual Work Plan Report

Platte River Recovery Implementation Program

For More Information Contact: Jason Farnsworth, farnsworthj@headwaterscorp.com, (308) 237-5728

General Priorities

- * **Good Neighbor Policy** - Conducted all actions in accordance with Program's good neighbor policy.

Operations and Maintenance Priorities

- * **Basic Property Maintenance Obligations and Needs** – Fulfilled basic property ownership obligations and needs on Tracts W2016001, W2016002, W2017001, & W2017002 including fence and road maintenance, irrigation management and noxious weed control.
- * **Agricultural Operations** – Oversight of grazing/ haying lease on Tract W2016001 and custom farming on Tract W2016002

Priority Area: General

Item(s): *Complex Land Interest and Complex-Level Planning*

No.	Management Activities	Budget Line Item	Completed	Cost (Estimated)	Actual Cost
WP 1	Coordination of Program land actions with neighboring landowners	N/A	Yes	N/A	N/A

Priority Area: Irrigation Management

Item(s): *Ditch Coordination*

No.	Management Activities	Budget Line Item	Completed	Cost (Estimated)	Actual Cost
WP 2	Tract W2016001 Ditch Coordination	WP-4 (j)	Yes	\$1,000	\$0

Priority Area: Operations and Maintenance

Item(s): *Basic Property Maintenance Obligations and Needs*

No.	Management Activities	Budget Line Item	Completed	Cost (Estimated)	Actual Cost
WP 3	Fence and road maintenance	WP-4 (j)	No	\$10,000	\$0
WP 4	Noxious weed control	WP-4 (j)	Yes	\$15,000	\$1,241
WP 5	Mowing	WP-4 (j)	Yes	\$2,000	\$748

Priority Area: Operations and Maintenance

Item(s): *Agricultural Operations*

No.	Management Activities	Budget Line Item	Completed	Cost (Estimated)	Actual Cost
WP 6	Tract W2016001 Lease Oversight	N/A	Yes	N/A	0
WP 7	TractW 2016002 Lease Oversight	WP-4 (j)	Yes	\$25,000	\$26,253

Priority Area: *Unplanned Expenses*

Tract No.	Management Activities	Item(s):	Budget Line Item	Actual Cost
2009007	Electricity for Augmentation well	Basic Property	WP-4 (j)	\$3,339
W201602	Inactive Electricity Charge	Basic Property	WP-4 (j)	\$209
W201701	Electricity	Basic Property	WP-4 (j)	\$275
W201701	Asbestos Inspection & Report	Basic Property	WP-4 (j)	\$650
W201701	Asbestos Removal & Disposal	Basic Property	WP-4 (j)	\$2,700
W201701	Trash and Cleaning of Morton Building	Basic Property	WP-4 (j)	\$1,455
W201701	Replace East Doors on Morton Building	Basic Property	WP-4 (j)	\$8,394
W201701	Upgrade Electrical in Morton Building	Basic Property	WP-4 (j)	\$1,657
W201701	Remove heating/ Ac unit from house- prep for demo	Basic Property	WP-4 (j)	\$255
W201701	Remove septic, disconnect water, upgrade pump from	Basic Property	WP-4 (j)	\$6,340
W201701	48" x 36' 12 ga culvert	Basic Property	WP-4 (j)	\$2,875
W201601	Check Structure Installation	Basic Property	WP-4 (j)	\$1,500
2010001	Install, assm, disassm, & pick up DDI flowmeter & valve for	Basic Property	WP-4 (j)	\$453

Property Identification Key:

W201601 – PRRIP Osborne Tract

W201602 – PRRIP Lindstrum Tract

W201701 – PRRIP Stall Homplace Tract

W201702 - PRRIP Albrecht Tract

W201703 - PRRIP Lakeside Tract

2018 Water Properties Budget Summary**2018 Expenditures by Program Budget Line Item**

Priority Area	Item	Budget Line Item	Estimated Expenditure	2018 Expenditure
Irrigation Management	Tract W2016001 Ditch Coordination	WP-4j	\$1,000	\$0
Operations and Maintenance	Property Maintenance and Agricultural Operations	WP-4j	\$52,000	\$58,344
		Total	\$53,000	\$58,344

2018 Revenues

Tract	Item	Estimated Income	2018 Income
Tract W201601	Grazing Income	\$1,000	\$1,080
Tract W201602	Crop Income	\$5,760	\$32,577
Tract W201701	Grazing Income	\$0	\$1,017
Tract W201702	N/A	\$0	\$0
		Total	\$34,674